



# Sustainability

"meet the needs of the present without compromising the ability of future generations to meet their own needs."

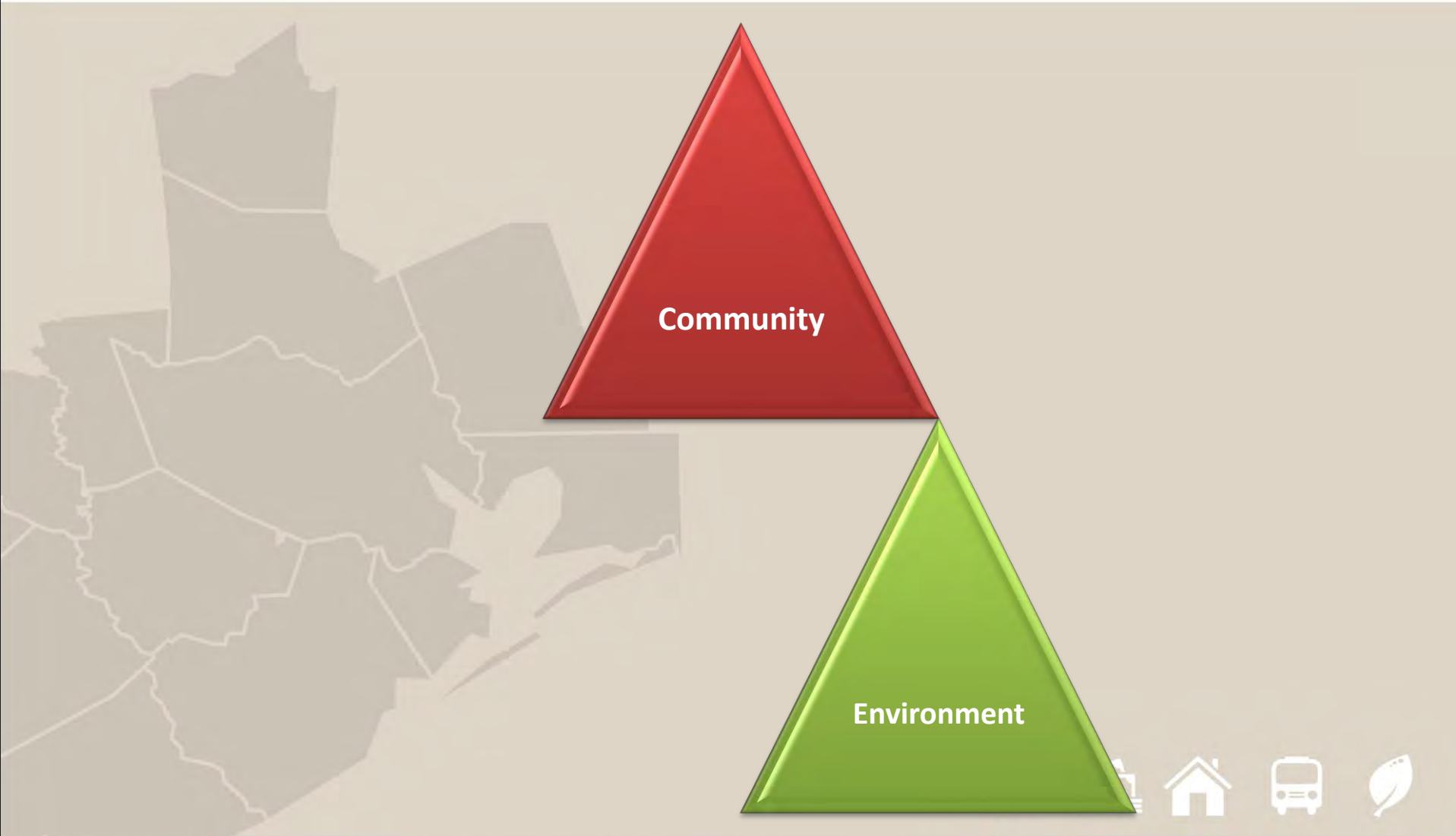




# Sustainable Development Components



# Sustainable Development Components



# Sustainable Development Components



# Sustainable Development Components



# Grant Details

- HUD, DOT, EPA collaboration
- \$3.75 million grant, \$2+ million in matching funds and in-kind services
- Nationally competitive grant program
- 3-year planning process, 13 county region
  - Austin, Brazoria, Chambers, Colorado, Fort Bend, Galveston, Harris, Liberty, Matagorda, Montgomery, Waller, Walker, Wharton



# Why a Regional Plan for Sustainable Development?

There is an emerging recognition that this region has the building blocks to be one of the most livable, equitable and sustainable places in the nation.







# Regional Plan for Sustainable Development

- First regionally-adopted, consensus-based sustainability plan
- Based on citizen input, including building capacity of underrepresented groups
- Articulate a vision and set measurable goals whose progress can be tracked through metrics and data



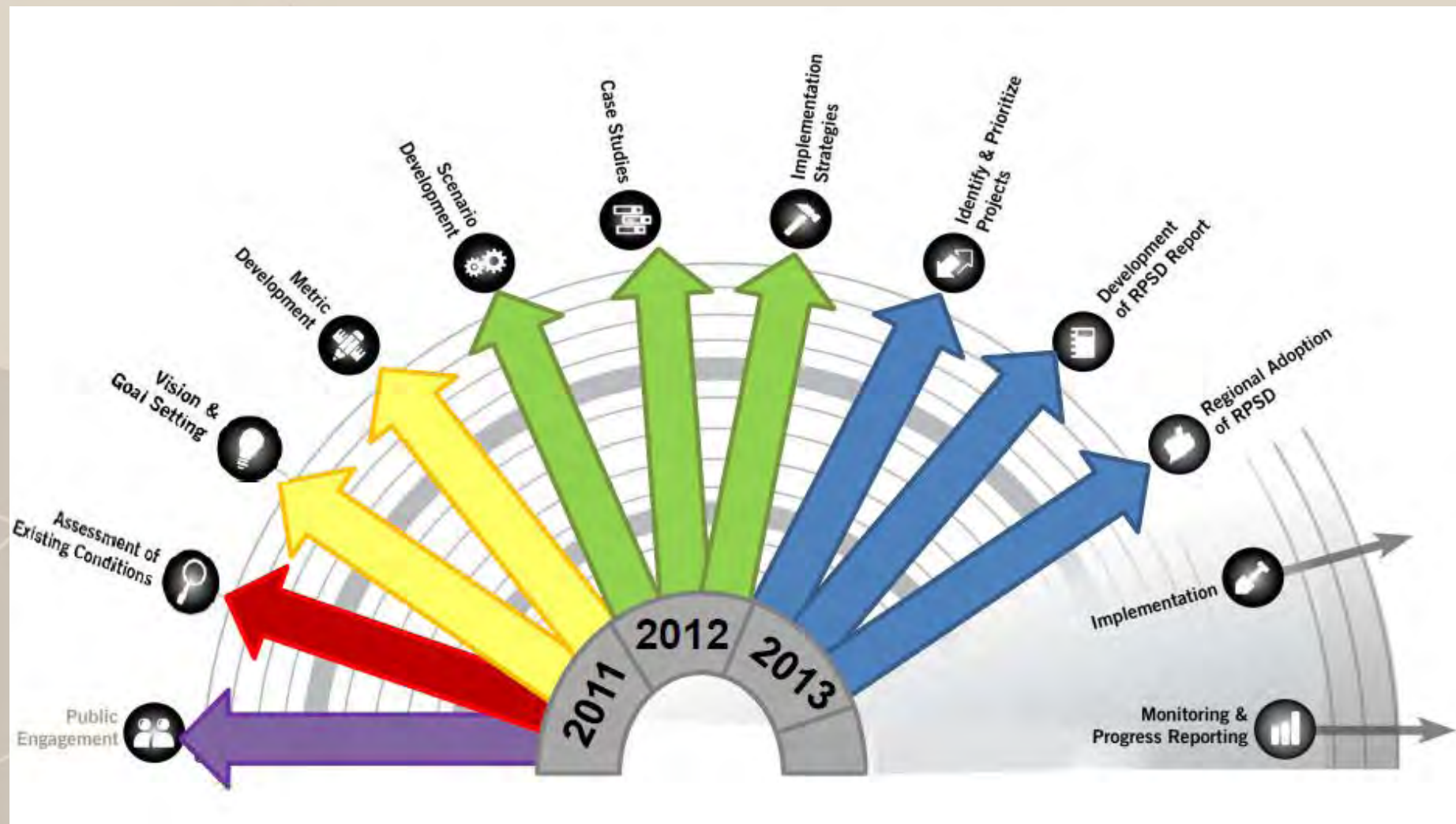


# Key Elements of Planning Process

- Engaging the public
- Documenting baseline data, establishing metrics
- Developing and testing three policy/investment scenarios, selecting preferred scenario
- Developing context-specific implementation strategies through community case studies
- Creating a platform for ongoing dialogue between regional entities, local stakeholders and the public



# Timeline





# Consortium Members

- Bay City Community Development Corporation
- Blueprint Houston/Center for Houston's Future
- Brazoria County
- Chambers County
- Fort Bend County
- City of Galveston
- Gulf Coast Economic Development District
- Greater Houston Builders' Association
- Houston Tomorrow
- Harris County
- City of Houston
- Houston Advanced Research Center
- Houston – Galveston Area Council
- Houston Wilderness
- City of Huntsville
- LISC
- METRO
- Montgomery County
- Neighborhood Centers, Inc.
- Port of Houston
- Texas Southern University
- United Way of Greater Houston
- Waller County Economic Development Partnership



## LEADERSHIP & GOVERNANCE

Primary stakeholders and elected officials provide oversight and ensure planning process results in viable strategies for implementation.

Governmental Advisory Committee

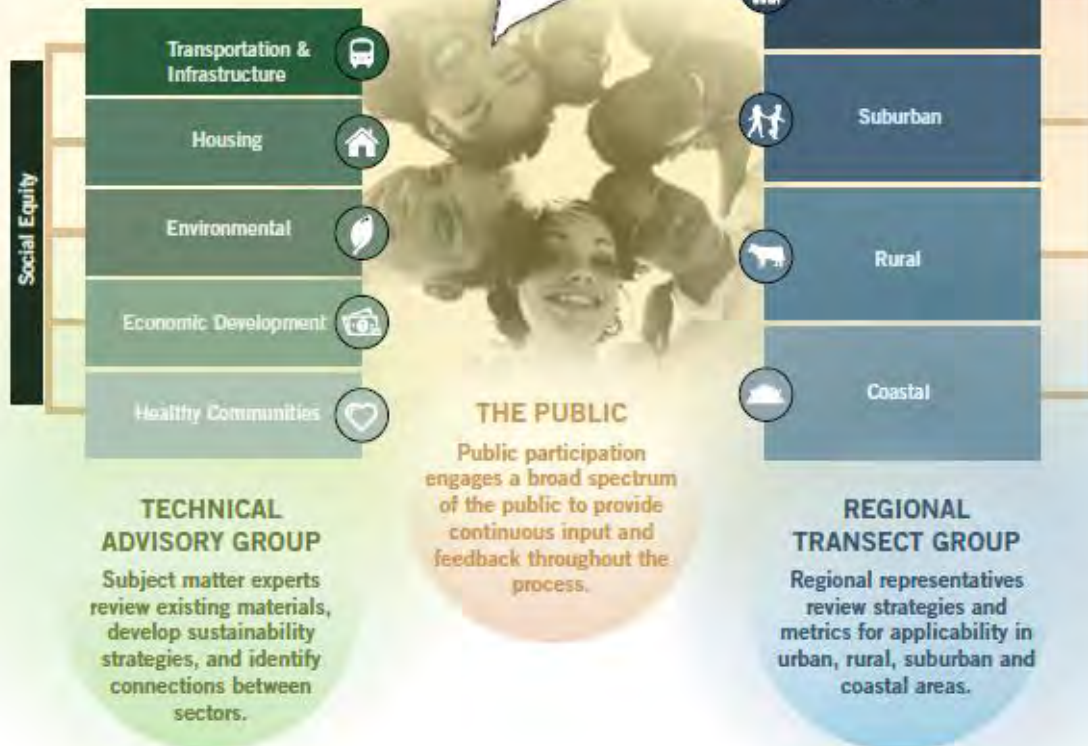
Coordinating Committee of the Consortium

### Roles of the Coordinating Committee

- Coordinates Technical Advisory Group and Regional Transect Group
- Implements Citizen Participation Plan
- Presents recommendations to Governmental Advisory Committee
- Monitors progress of plan development

### Representatives of the Coordinating Committee

- Government – Regional Planning Agency: H-GAC, Lead Applicant and Fiscal Agent
- Government – Policy Making
- Government – Service
- Research/Education
- Non-Profit/Advocacy



# Technical Advisory Groups

- Experts on range of issues in each topic area
- Leaders within fields, public and private sectors
- Ensure plan is grounded in best practices
- Provide technical input and review



# Regional Transect Groups

- Urban
- Suburban
- Rural
- Coastal





# Livability Principles

- Provide more transportation choices
- Promote equitable, affordable housing
- Enhance economic competitiveness
- Support existing communities
- Coordinate and leverage federal policies and investments
- Value communities and neighborhoods

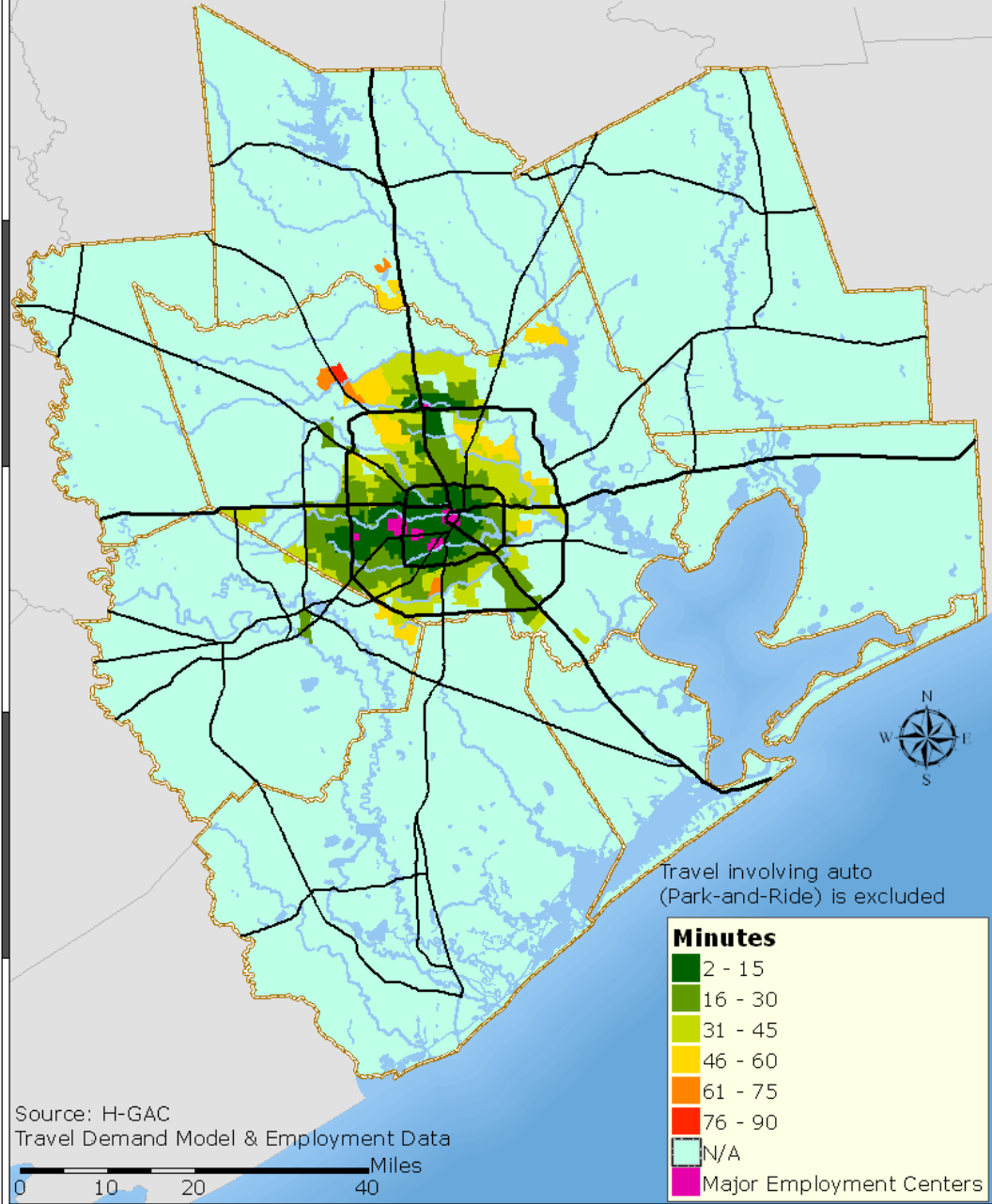


# Livability Principle

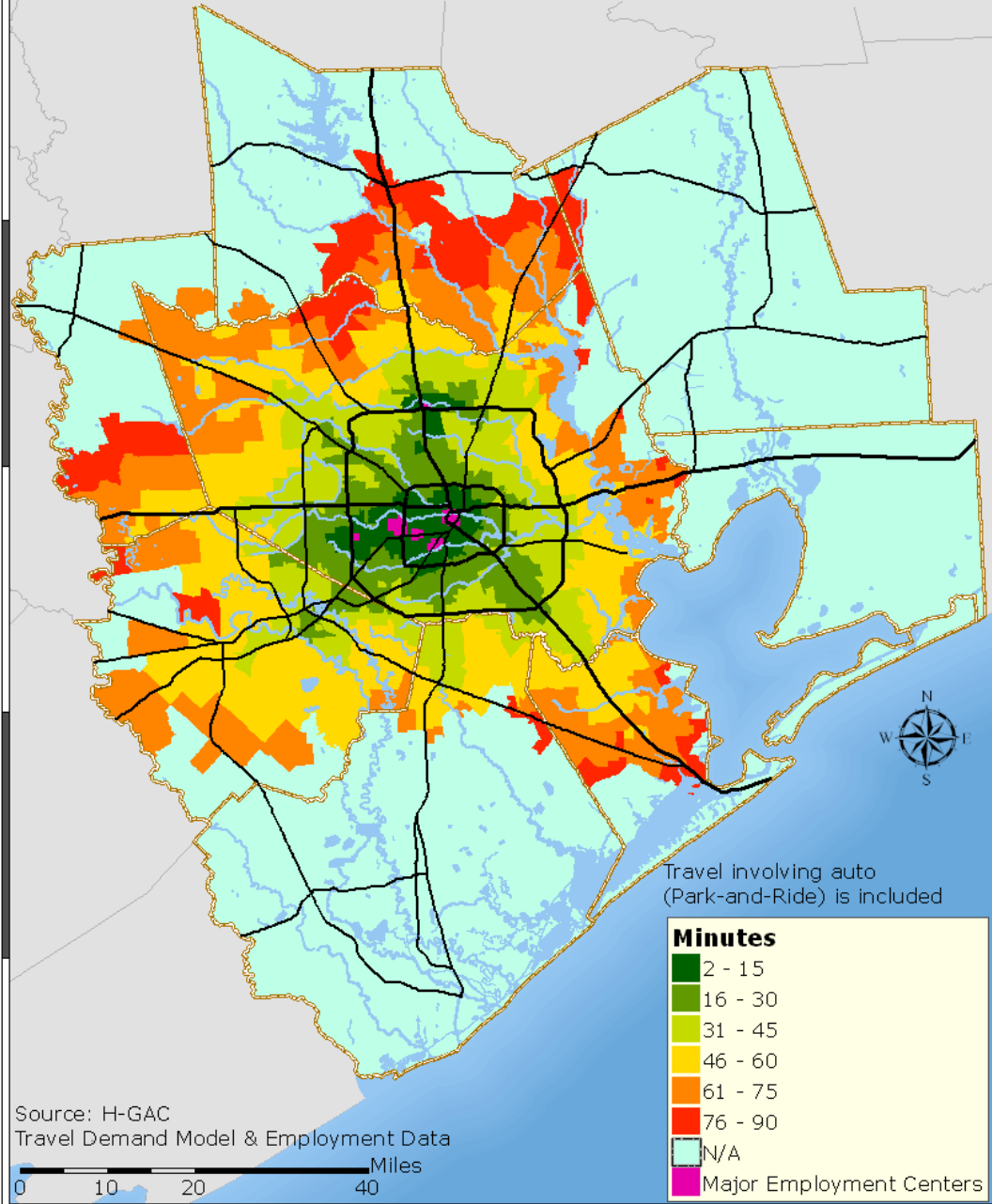
- **Provide more transportation choices.** Develop safe, reliable, and economical transportation choices to decrease household transportation costs, reduce our nation's dependence on foreign oil, improve air quality, reduce greenhouse gas emissions, and promote public health.



# Travel Time on Transit to the Nearest Major Employment Center (Top 25)

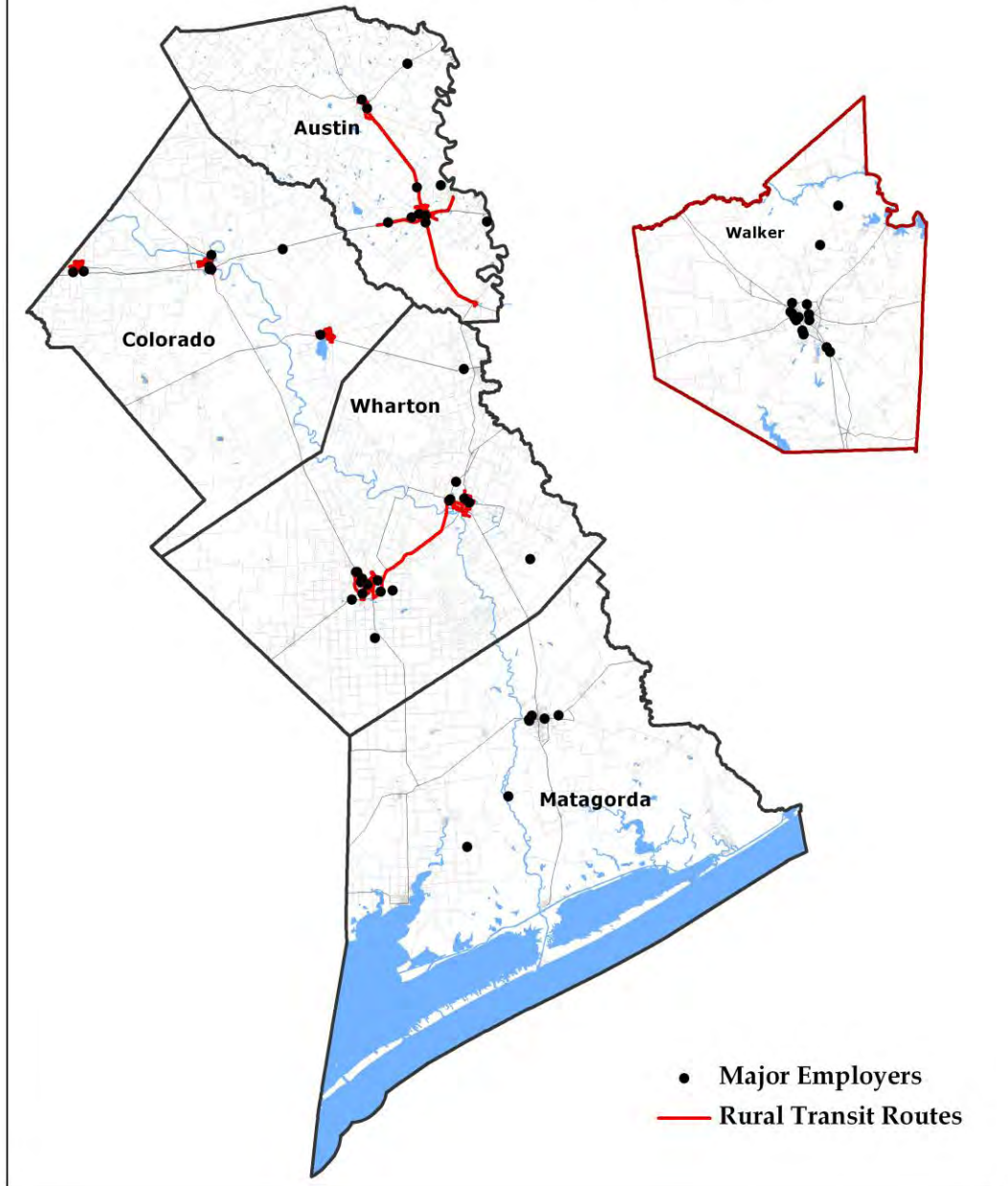


# Travel Time on Transit to the Nearest Major Employment Center (Top 25)





# Location of Major Employers for H-GAC Region Rural Counties

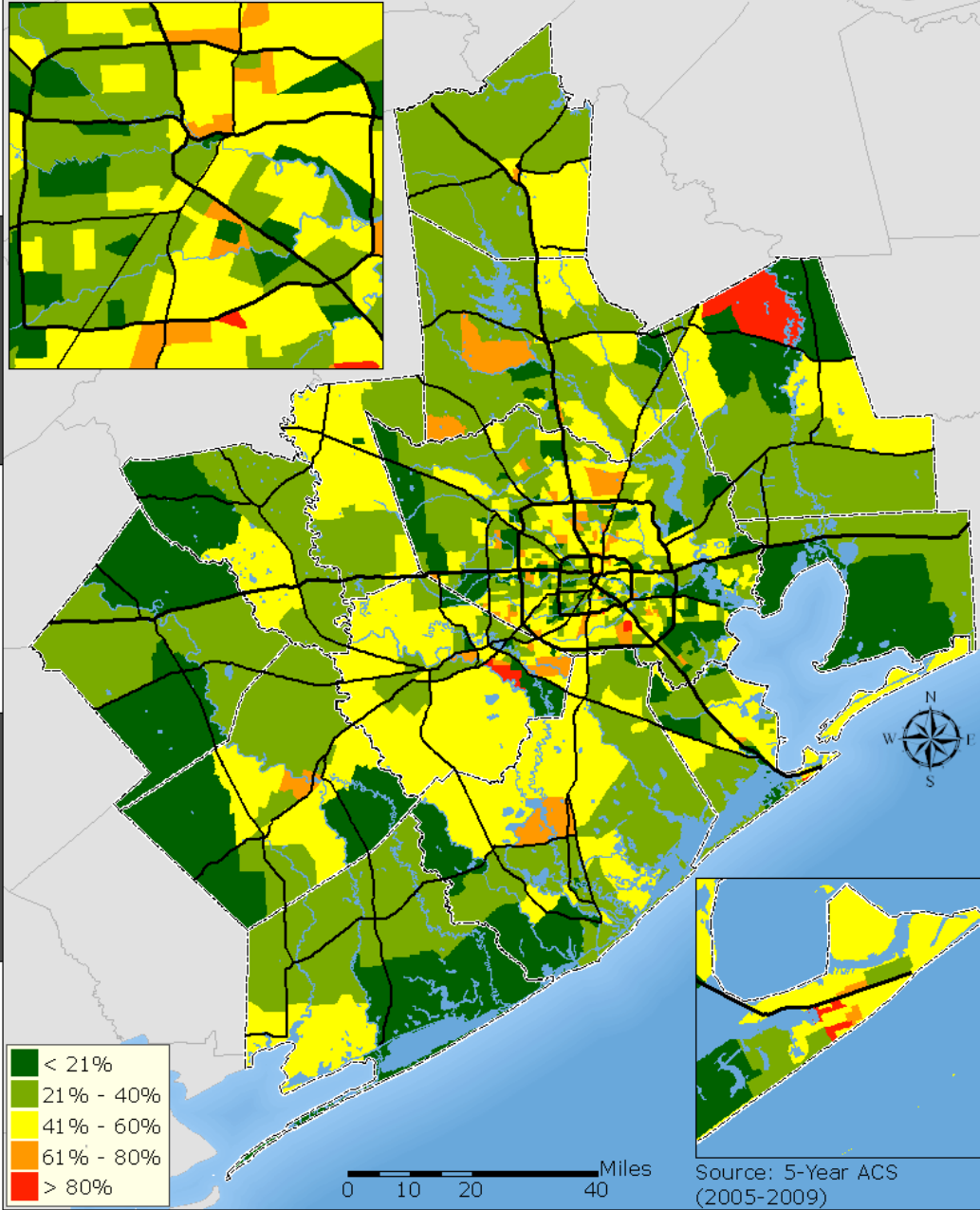


# Livability Principle

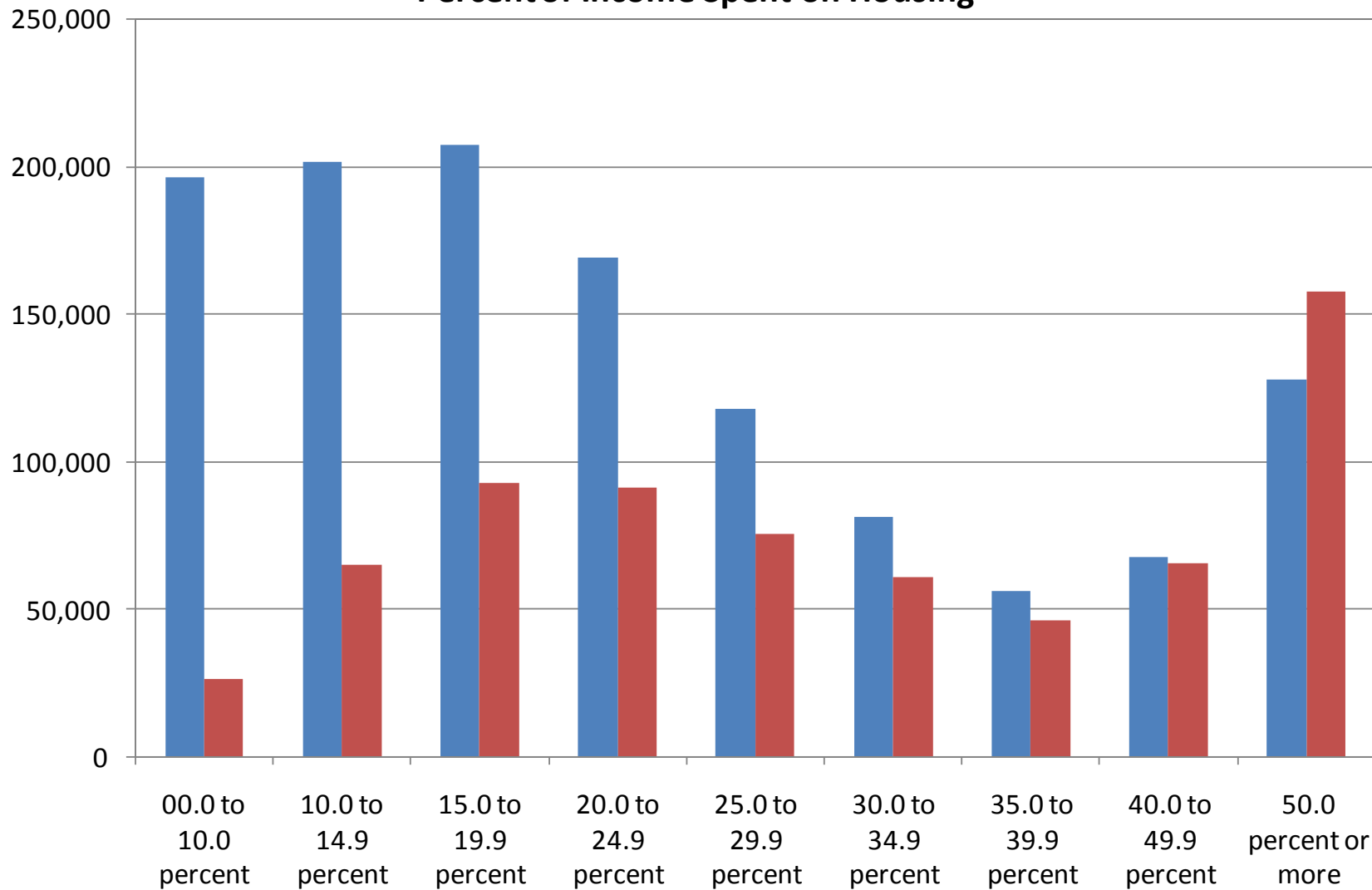
- **Promote equitable, affordable housing.** Expand location- and energy-efficient housing choices for people of all ages, incomes, races, and ethnicities to increase mobility and lower the combined cost of housing and transportation



# Percentage of Households Spending at Least 35% of Income on Housing



### Percent of Income Spent on Housing



Source: ACS 5-year Data (2005-2009)

■ Owners ■ Renters

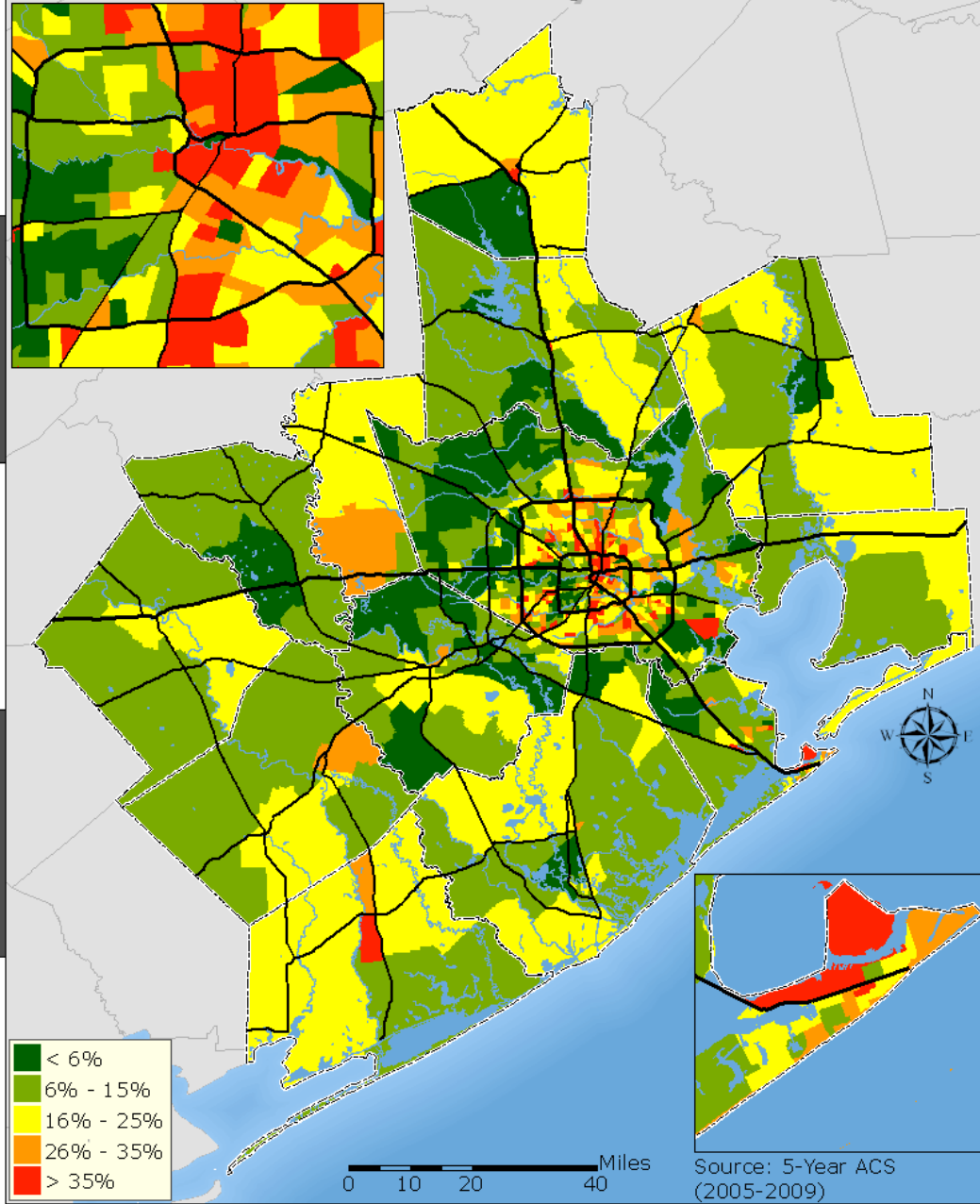


# Livability Principle

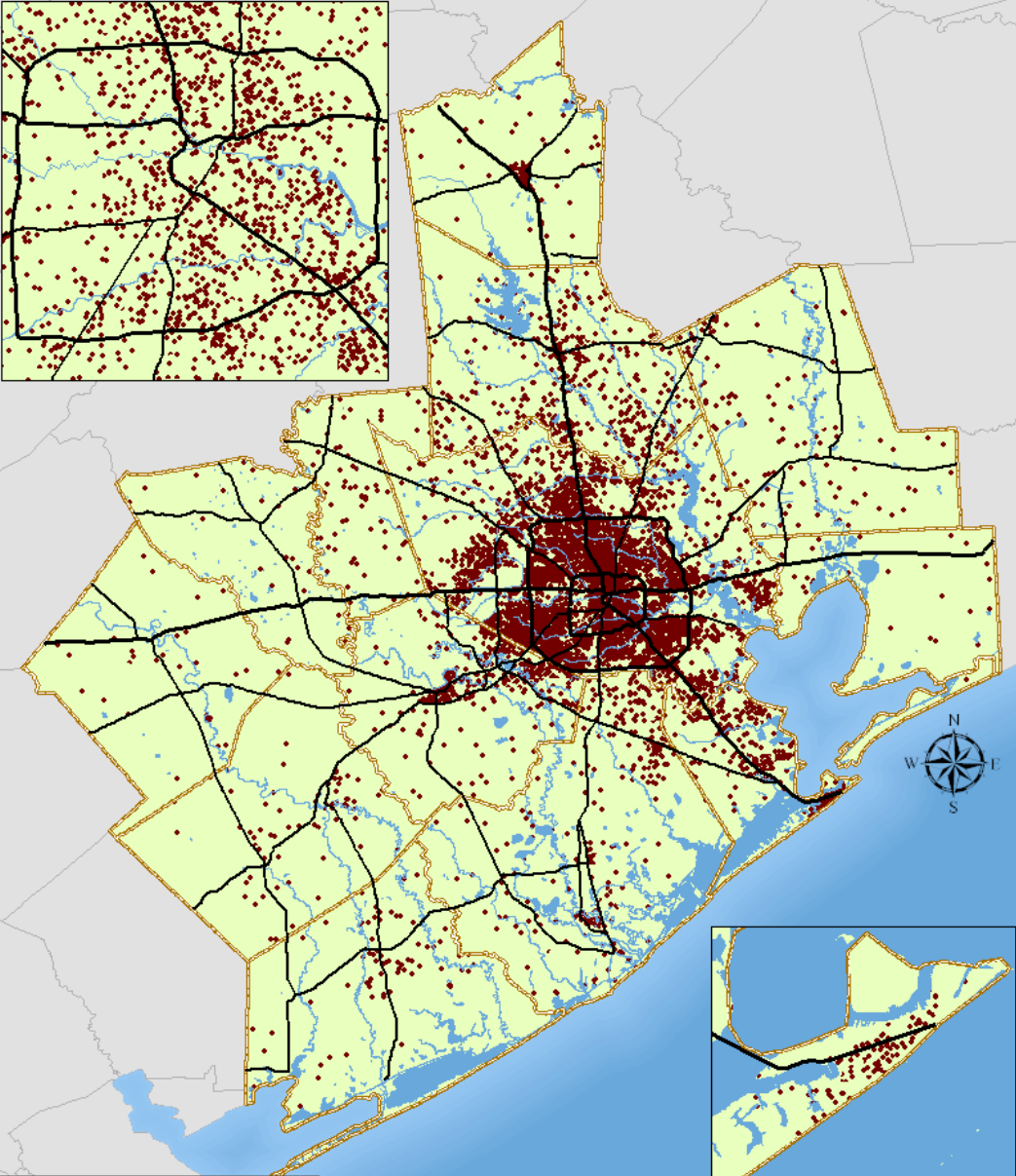
- **Enhance economic competitiveness.** Improve economic competitiveness through reliable and timely access to employment centers, educational opportunities, services and other basic needs by workers, as well as expanded business access to markets.



# Percent of People with Income Below Poverty Level



# Poverty

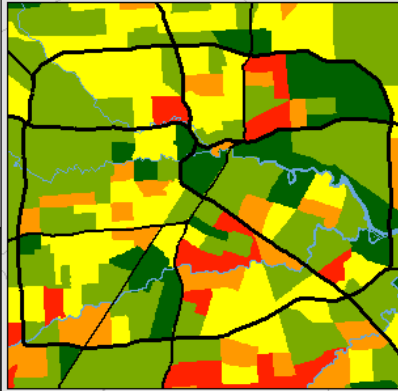


1 dot = 100 People with  
Income Below Poverty Level

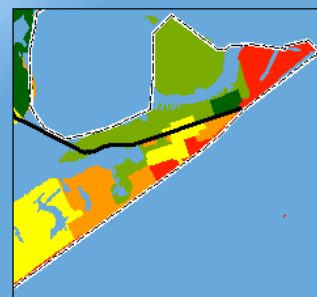
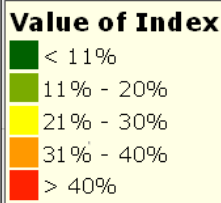
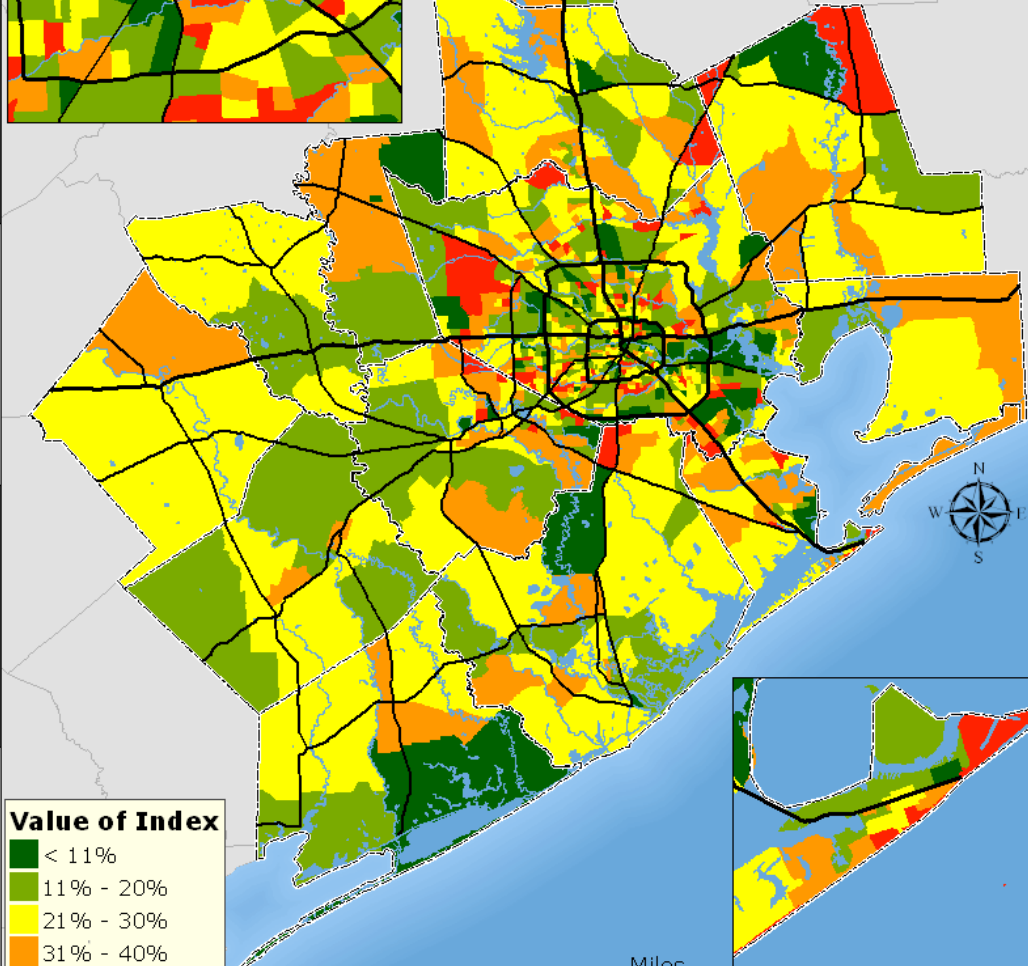
0 10 20 40 Miles

Source: LEHD 2009

# Low Wage Jobs and All Jobs



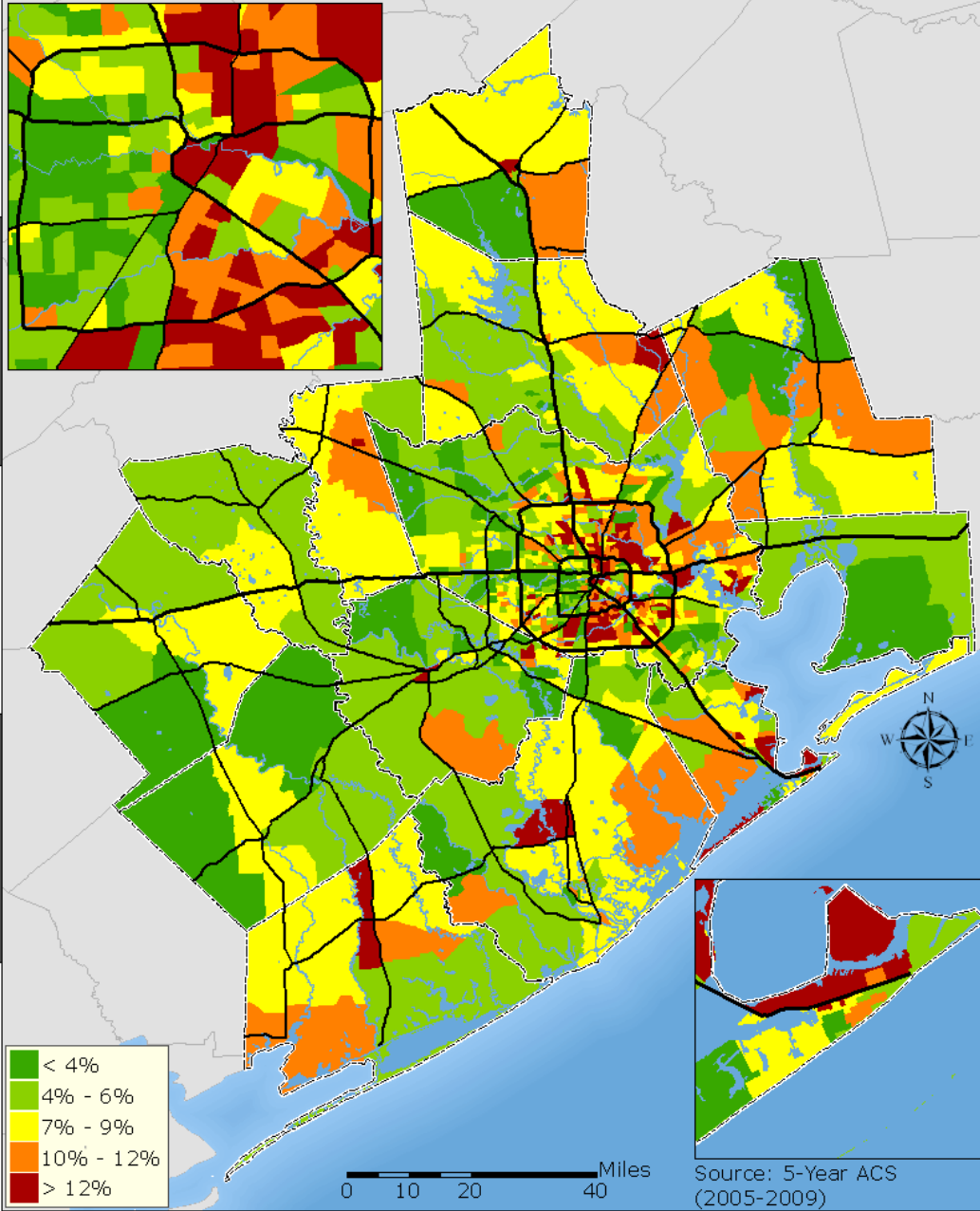
LWJ = number of low wage jobs located in a census tract  
AJ = number of all jobs located in a census tract  
Index =  $LWJ / AJ$   
Low values of Index identify areas where relatively few low wage jobs are located  
High values of Index identify areas where relatively many low wage jobs are located  
Low wage is defined as \$1,250/month or less



Source: LEHD 2009

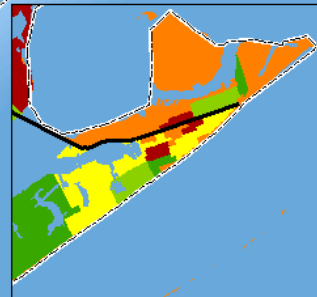
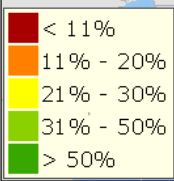
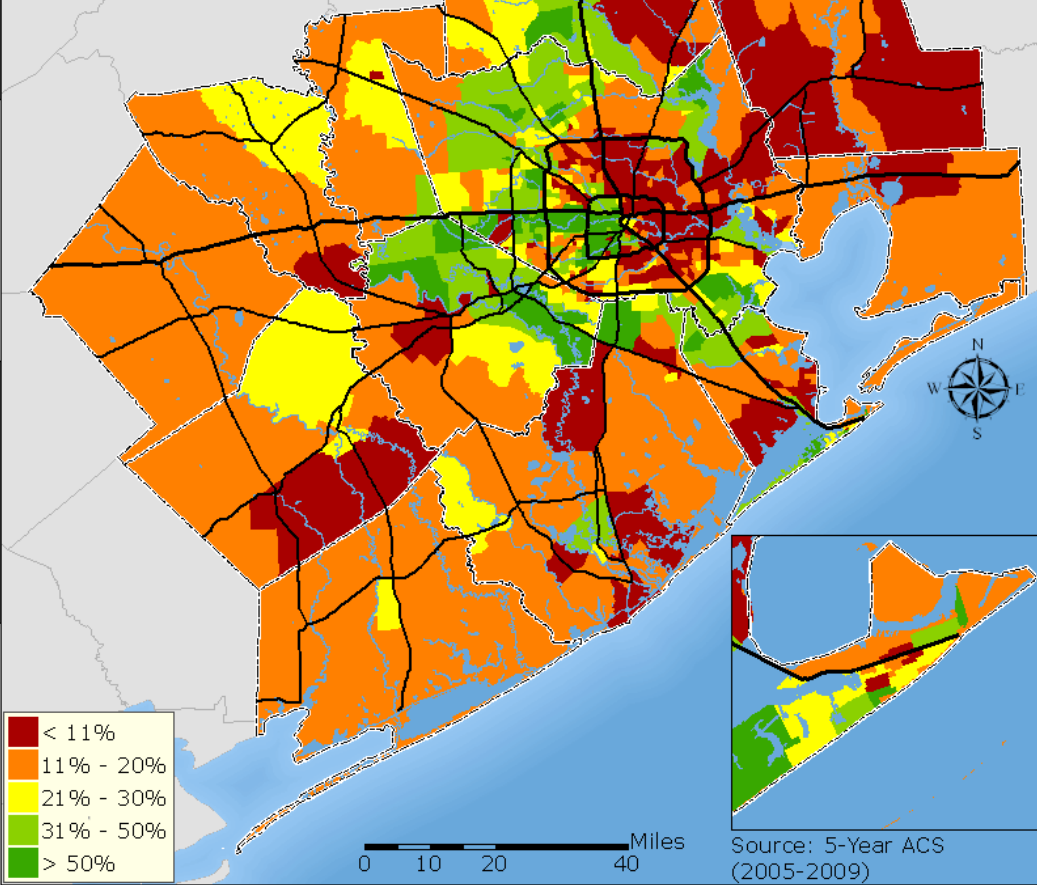
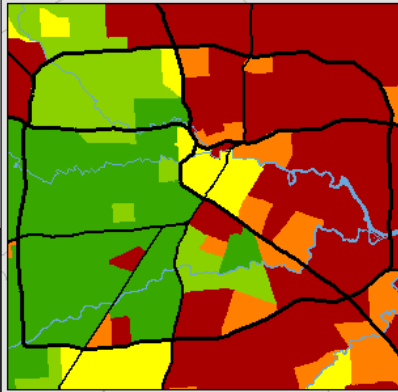


# Unemployment Rate



Source: 5-Year ACS  
(2005-2009)

# Percent of People Age 25+ with College Degree



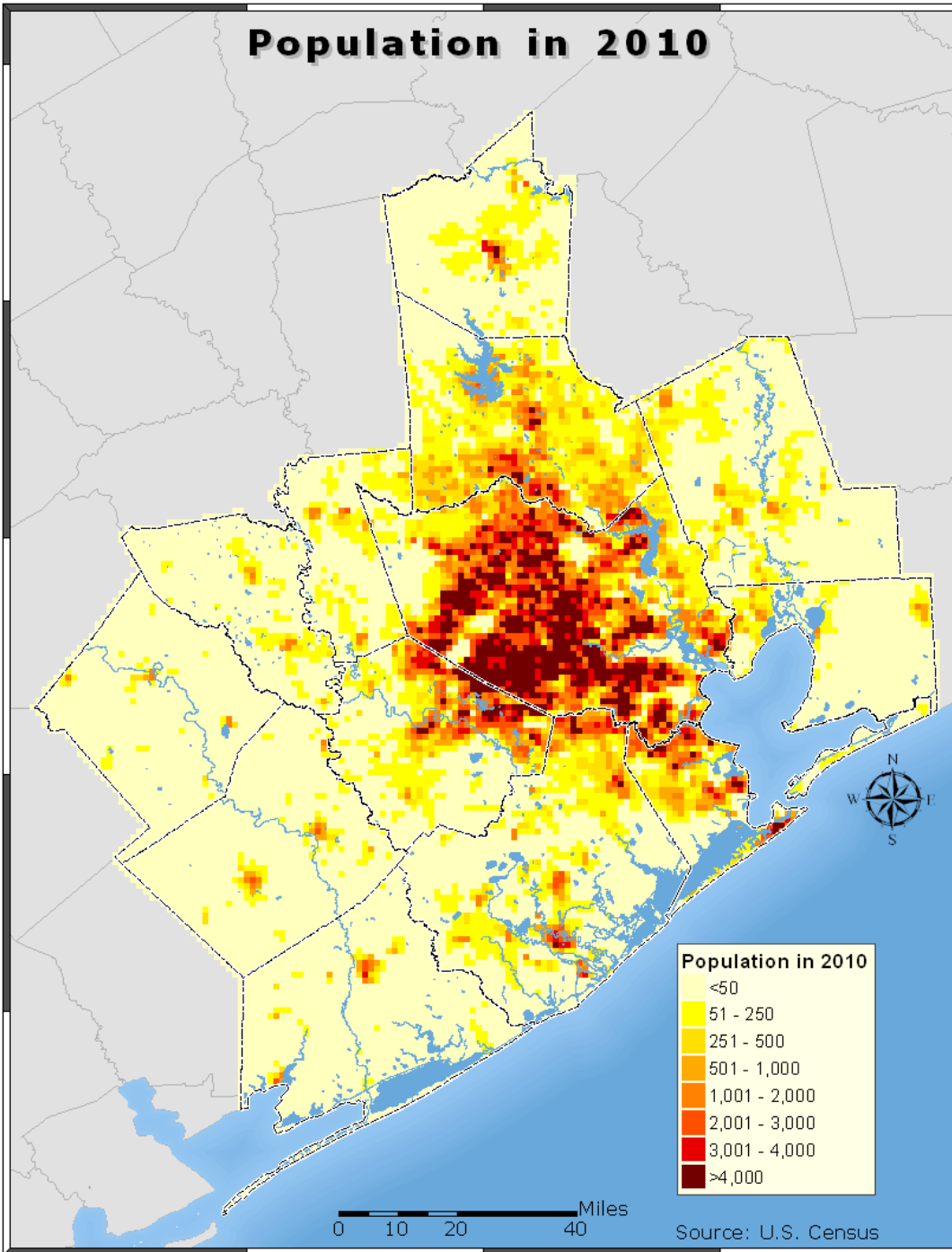
Source: 5-Year ACS (2005-2009)

# Livability Principle

- **Support existing communities.** Target federal funding toward existing communities—through strategies like transit oriented, mixed-use development, and land recycling—to increase community revitalization and the efficiency of public works investments and safeguard rural landscapes.

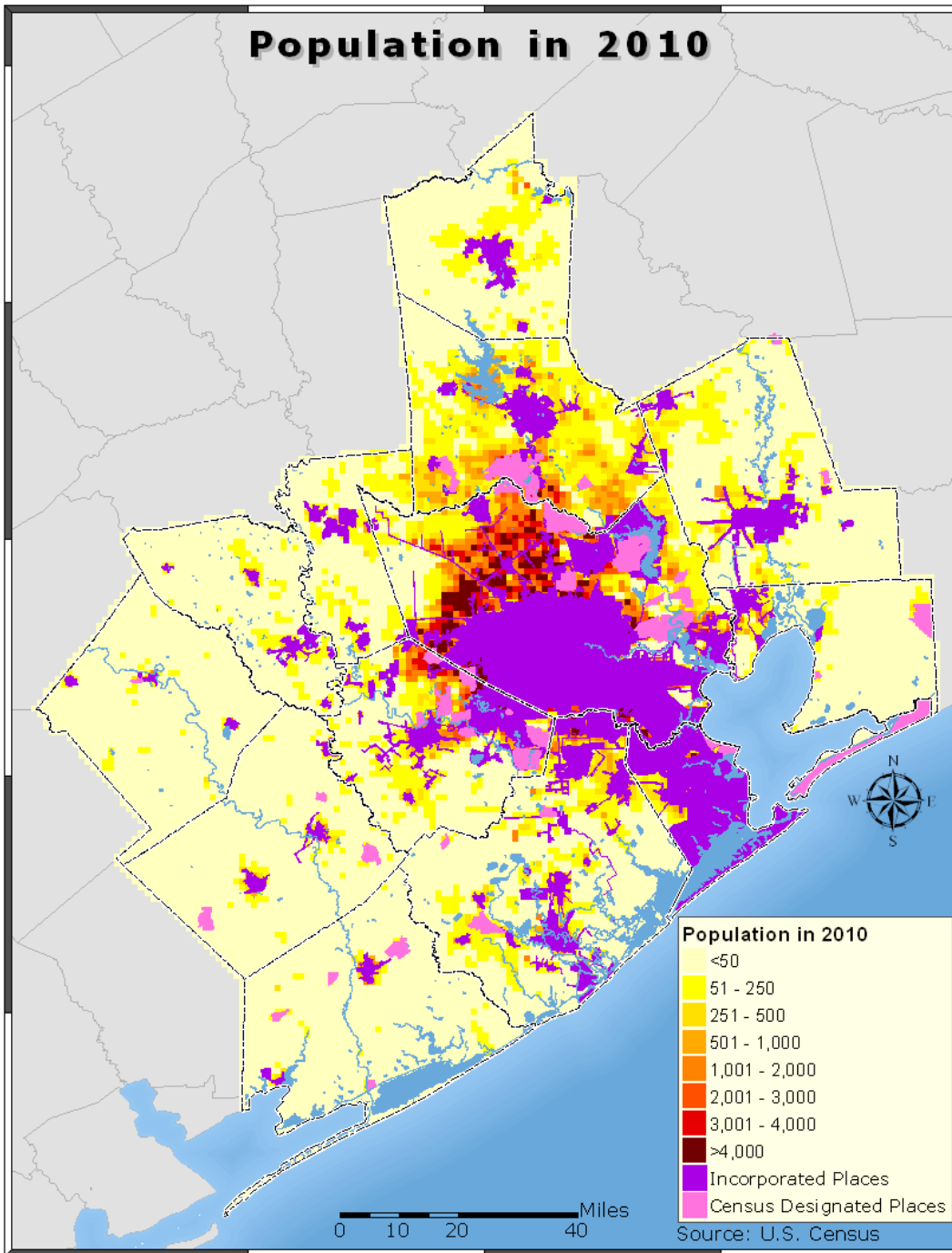


# Population in 2010





# Population in 2010

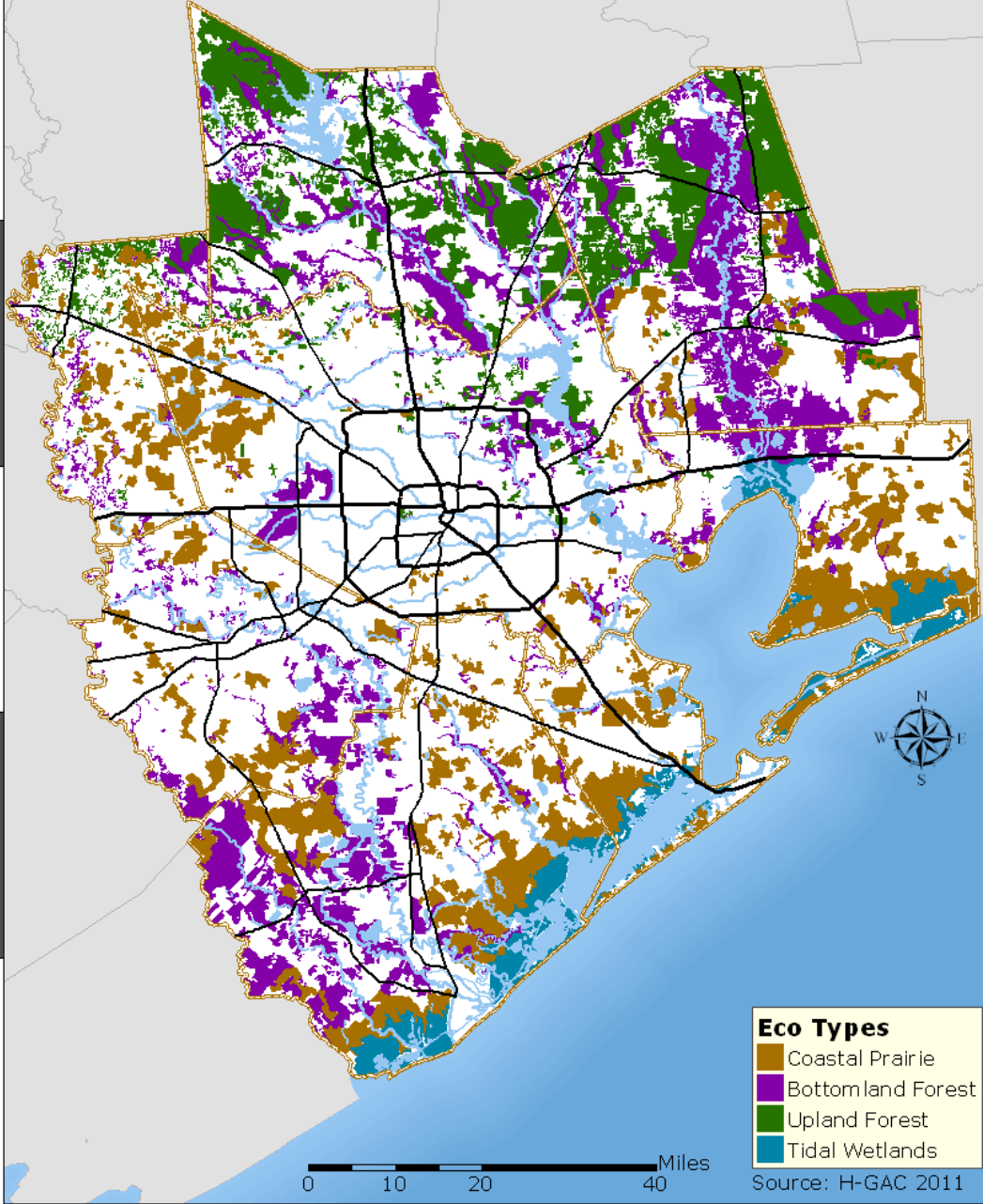


## Population in 2010

- <50
- 51 - 250
- 251 - 500
- 501 - 1,000
- 1,001 - 2,000
- 2,001 - 3,000
- 3,001 - 4,000
- >4,000
- Incorporated Places
- Census Designated Places

Source: U.S. Census

# Regional Eco Types



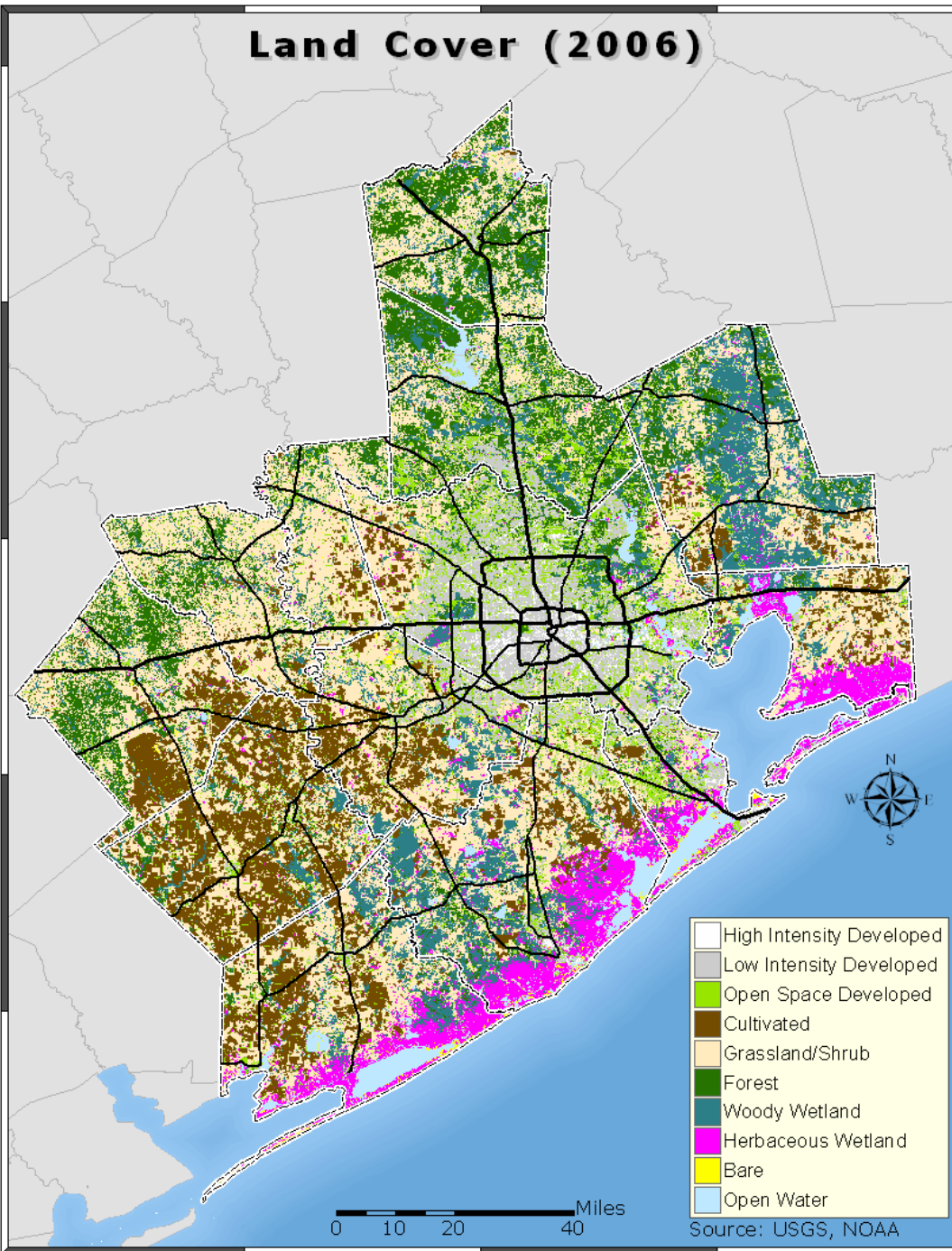
**Eco Types**

- Coastal Prairie
- Bottomland Forest
- Upland Forest
- Tidal Wetlands

0 10 20 40 Miles

Source: H-GAC 2011

# Land Cover (2006)



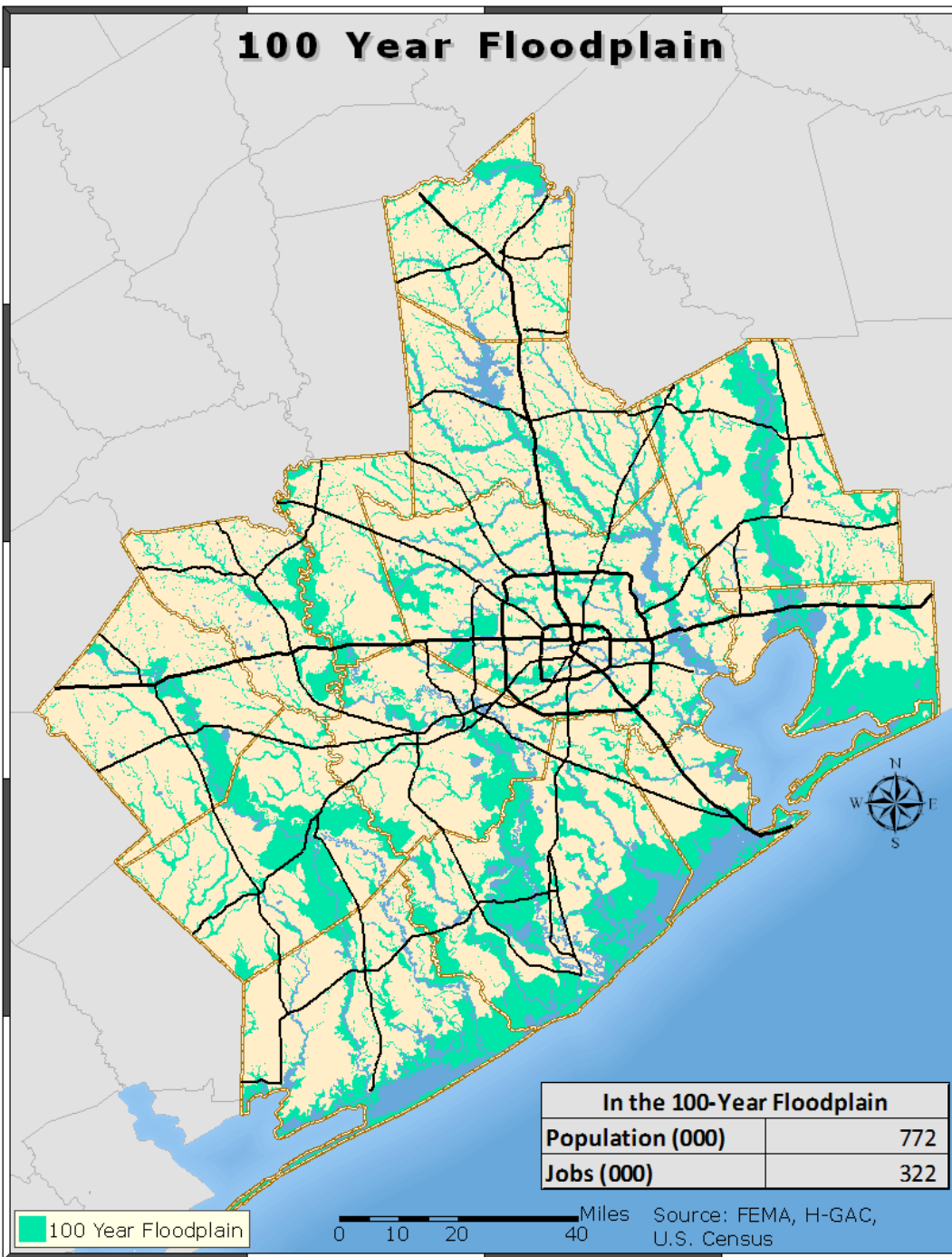
# Livability Principle

- **Coordinate and leverage federal policies and investment.** Align federal policies and funding to remove barriers to collaboration, leverage funding, and increase the accountability and effectiveness of all levels of government to plan for future growth, including making smart energy choices such as locally generated renewable energy

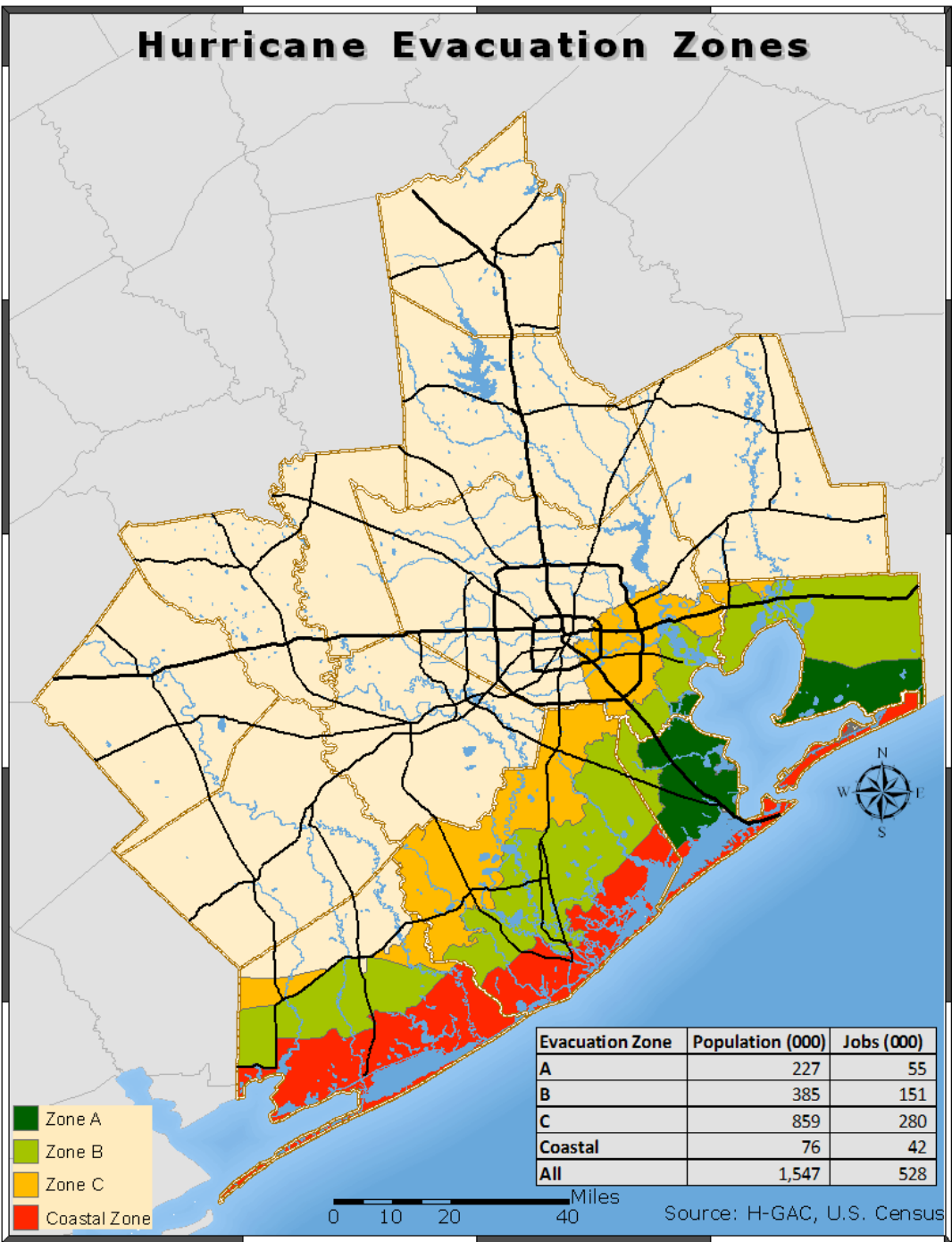




# 100 Year Floodplain



# Hurricane Evacuation Zones



- Zone A
- Zone B
- Zone C
- Coastal Zone

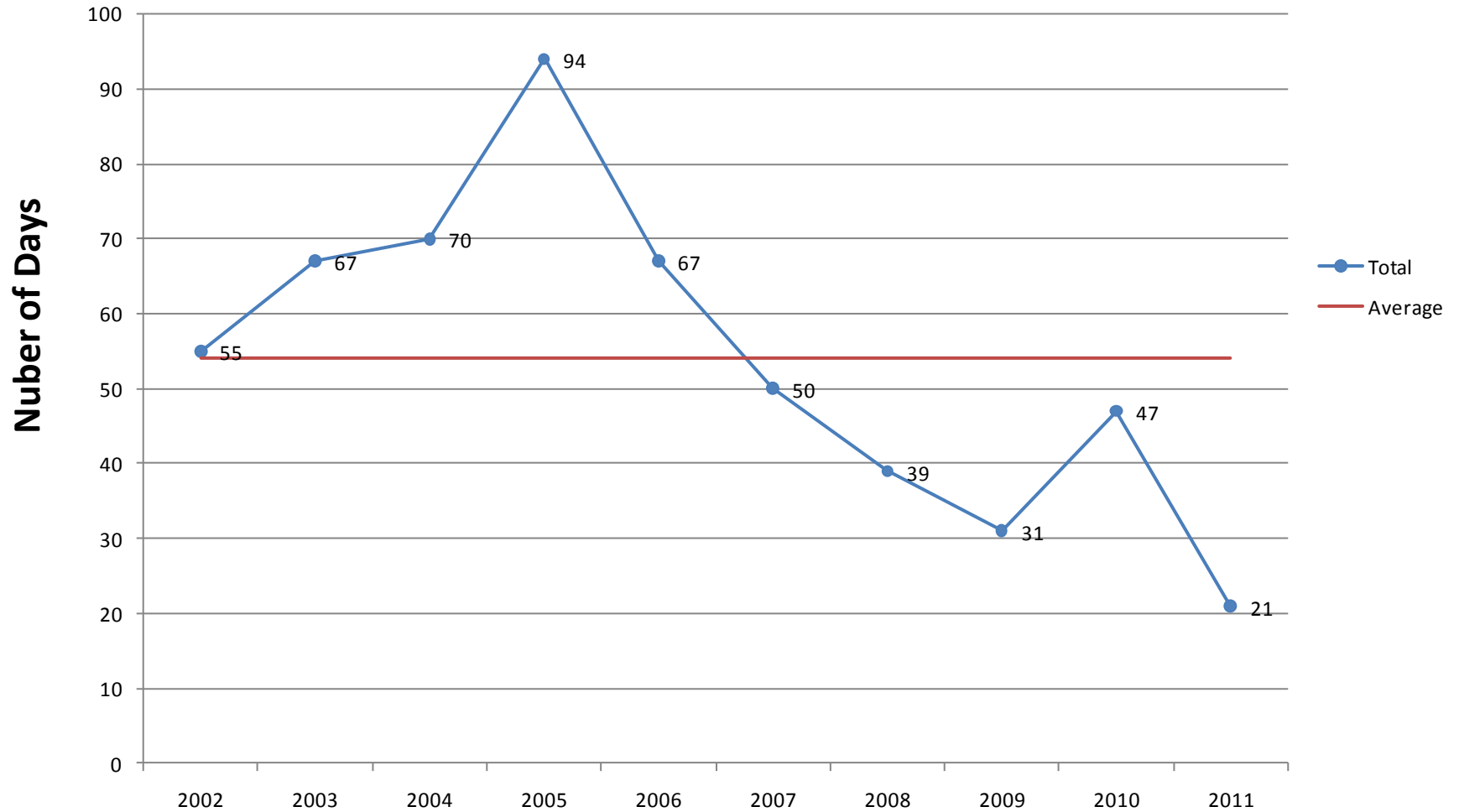
Evacuation Zone	Population (000)	Jobs (000)
A	227	55
B	385	151
C	859	280
Coastal	76	42
All	1,547	528

0 10 20 40 Miles

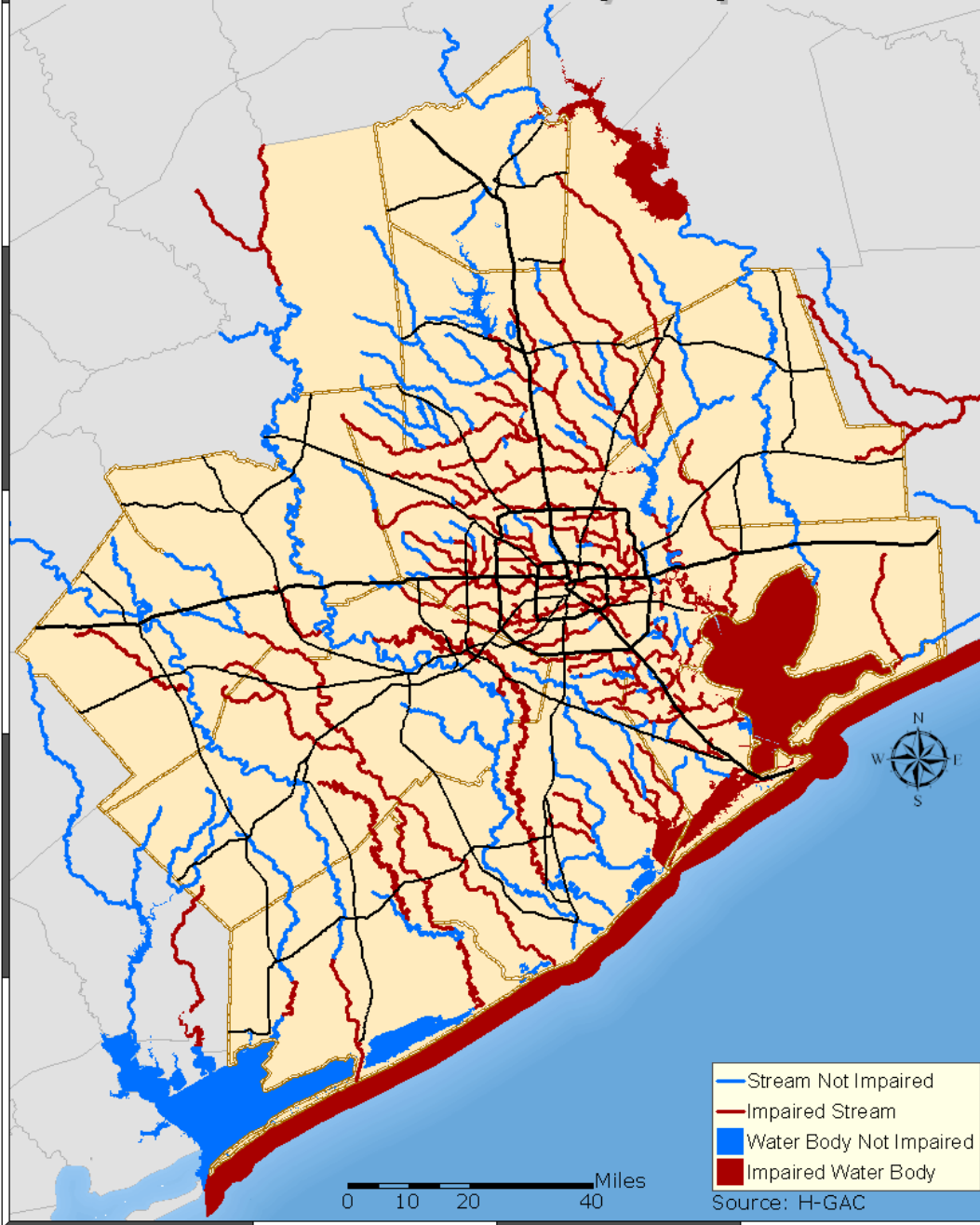
Source: H-GAC, U.S. Census

# Daily Exceedances from 2002 to 2011 for the 75 ppb 8-hour Ozone Standard (Regulatory and Nonregulatory)

Total Days per Year

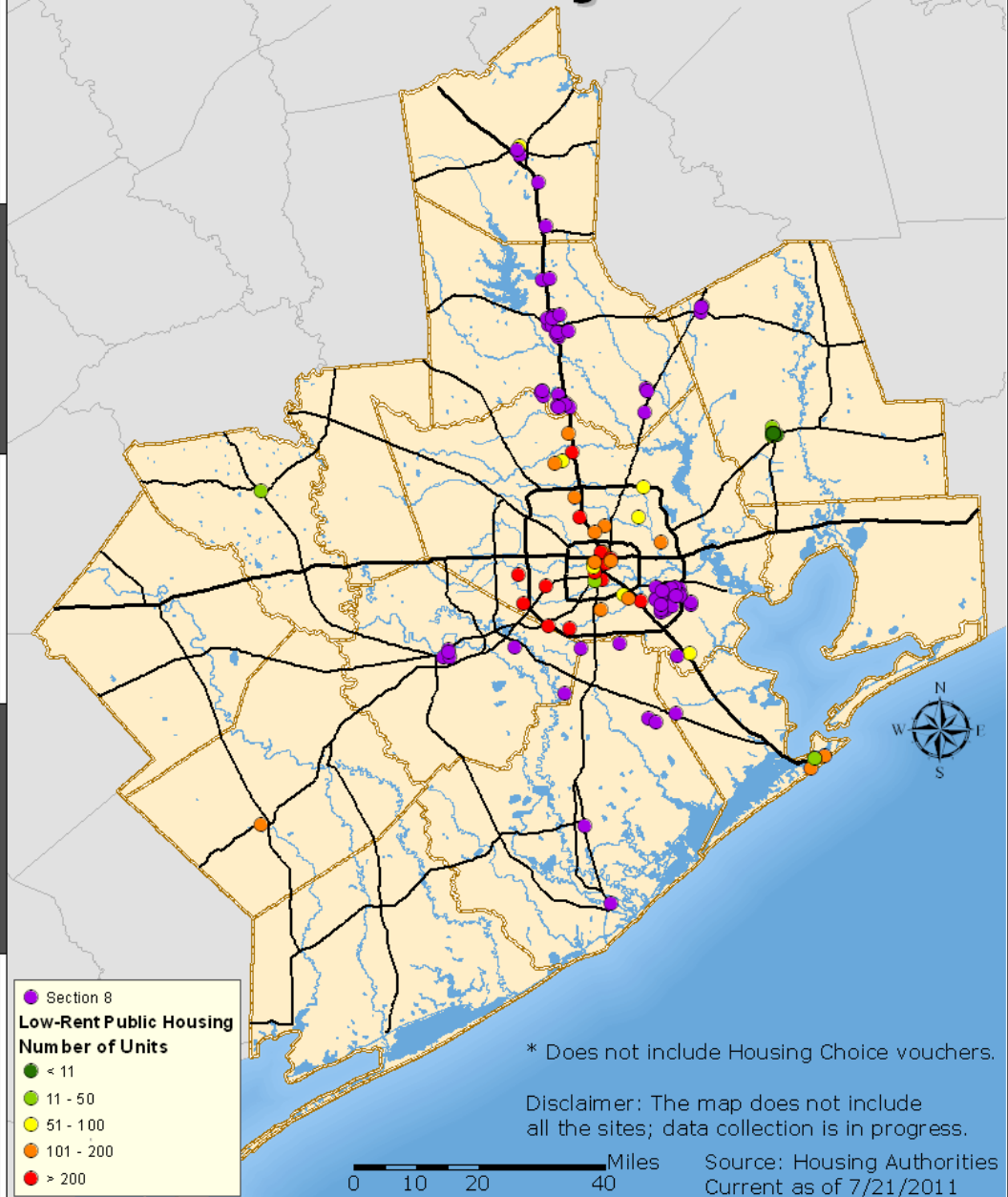


# Stream and Water Body Impairments





# Section 8 Vouchers and Low-Rent Public Housing Units\*



- Section 8
- Low-Rent Public Housing**
- Number of Units**
- < 11
- 11 - 50
- 51 - 100
- 101 - 200
- > 200

\* Does not include Housing Choice vouchers.

Disclaimer: The map does not include all the sites; data collection is in progress.

Source: Housing Authorities  
Current as of 7/21/2011

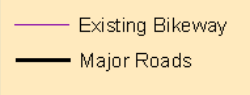
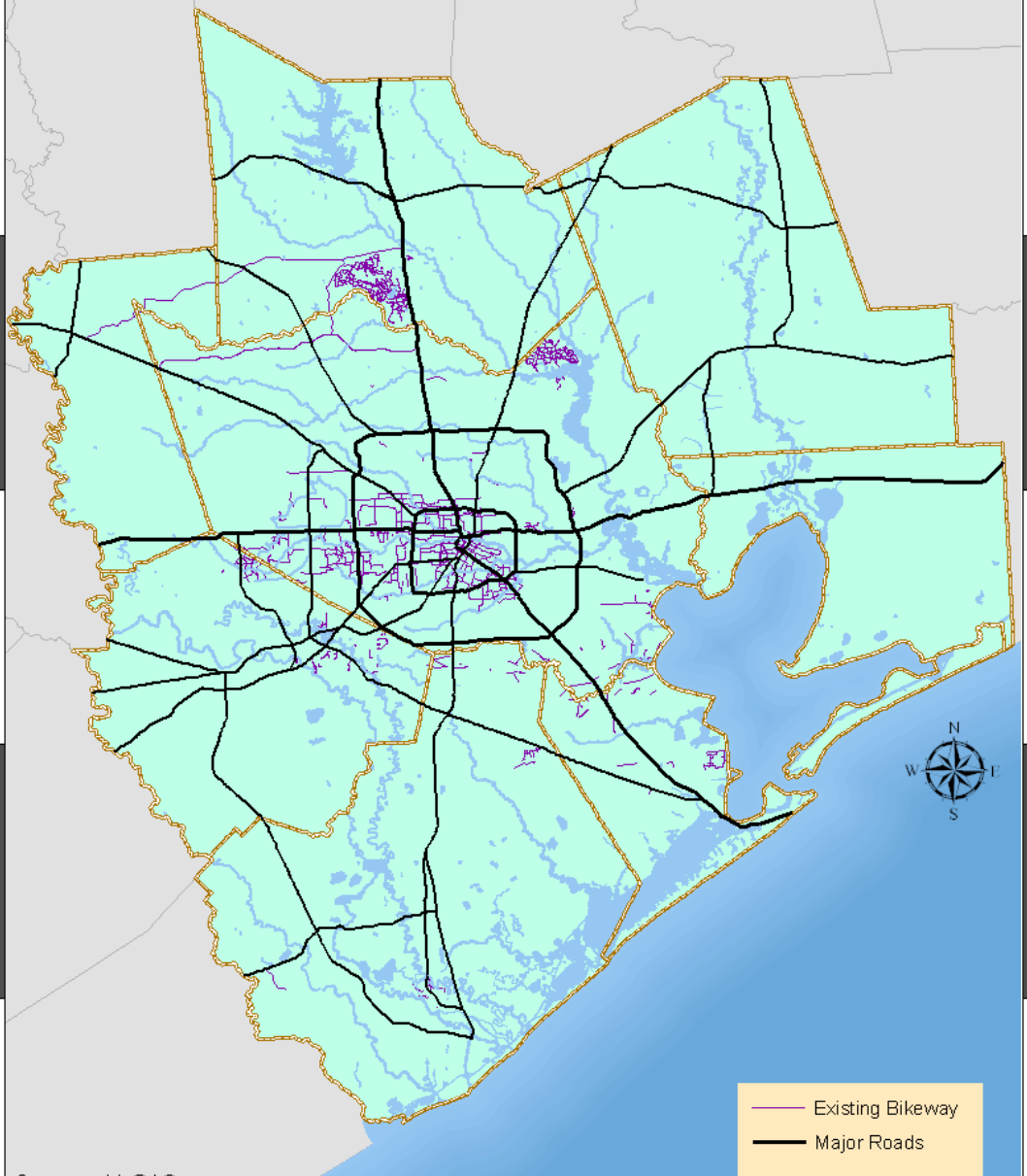
0 10 20 40 Miles

# Livability Principle

- **Value communities and neighborhoods.** Enhance the unique characteristics of all communities by investing in healthy, safe, and walkable neighborhoods—rural, urban, or suburban.



## Existing Bikeways



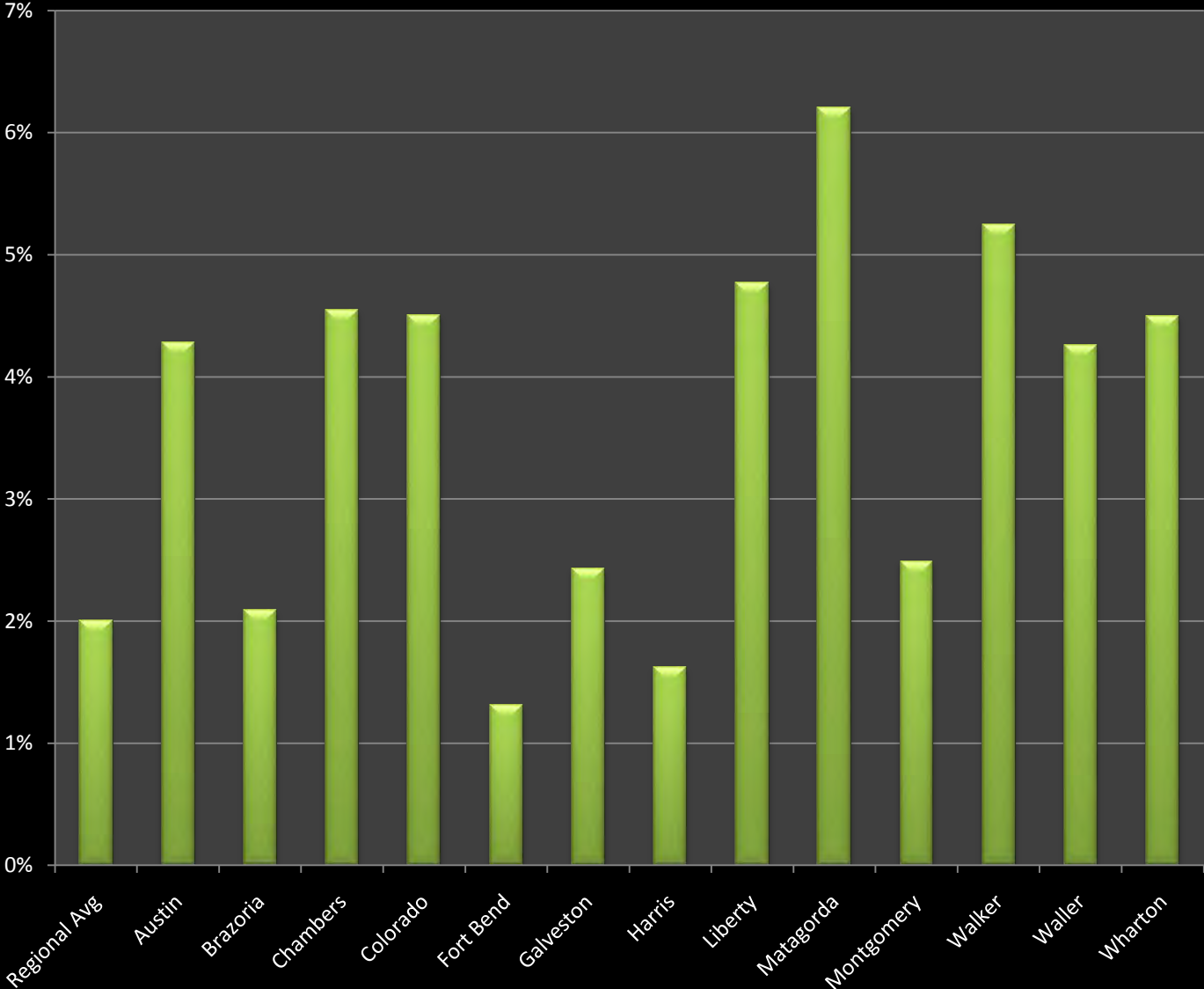
Source: H-GAC

0 10 20 40 Miles

**Residents Within 1 Mile of Existing Bikeway  
(8-County Region)**

County	Number	Percent
Brazoria	121,459	39%
Chambers	Data not available	
Fort Bend	224,114	38%
Galveston	133,997	46%
Harris	2,415,050	59 %
Liberty	Data not available	
Montgomery	170,133	37%
Waller	6,551	15%
<b>TOTAL</b>	<b>3,071,304</b>	<b>54%</b>

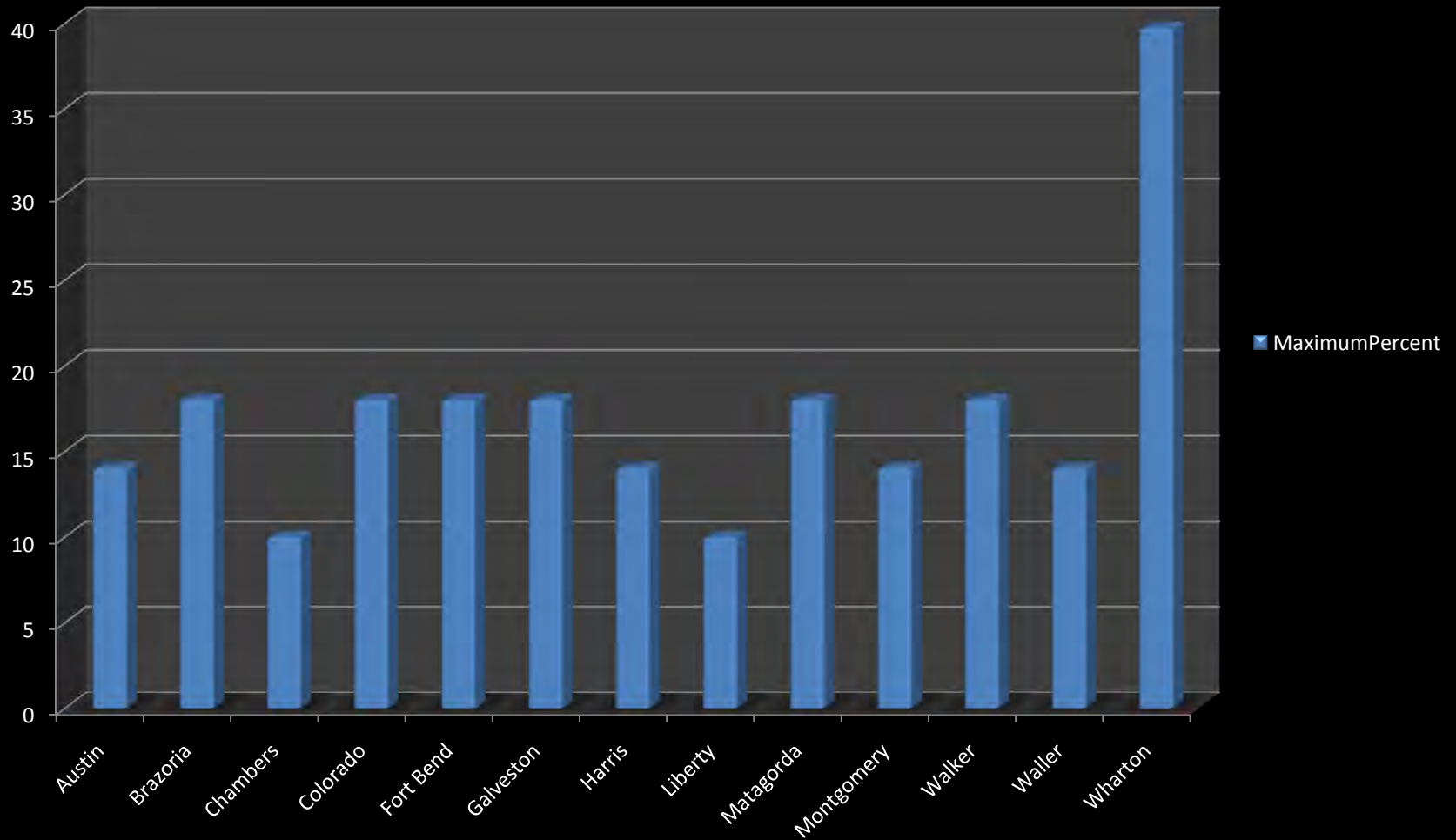
# Percentage of Households with No Car Living Greater Than 1 Mile from Grocery Store



Source: USDA Economic Research Service, Food Environment Atlas , 2006, <http://www.ers.usda.gov/foodatlas/>



## Percent Childhood Obesity Among Children Ages 2-4 in Housholds with Income 200% or Less of Poverty Threshold Based on Family Size



# Workgroup Break-Outs

- Chance to meet fellow workgroup participants
- Delve into defining elements of sustainability
- Highlighting opportunities and challenges
- Set the stage for future work



[www.gosustainablenow.org](http://www.gosustainablenow.org)



# Questions?

