

Green Infrastructure Plan for Greater Houston

THE CONSERVATION FUND

America's Partner in Conservation



Creating, Enhancing and Preserving the Places that Matter

Why Infrastructure?

THE CONSERVATION FUND

Infrastructure – “the substructure or underlying foundation on which the continuance and growth of a community depends” Webster’s New World Dictionary

- ✓ **Network connections are required for functioning infrastructure**
- ✓ **Infrastructure features and processes need to be managed to maintain essential services**
- ✓ **Funding for infrastructure needs to be provided up-front**
- ✓ **Infrastructure is a necessity not an amenity**



The Green Infrastructure Approach

THE CONSERVATION FUND

Green infrastructure helps us answer...

- Which lands to conserve?
- Where to permit development?
- Where to build roads and utilities?
- Where & how to select mitigation projects?



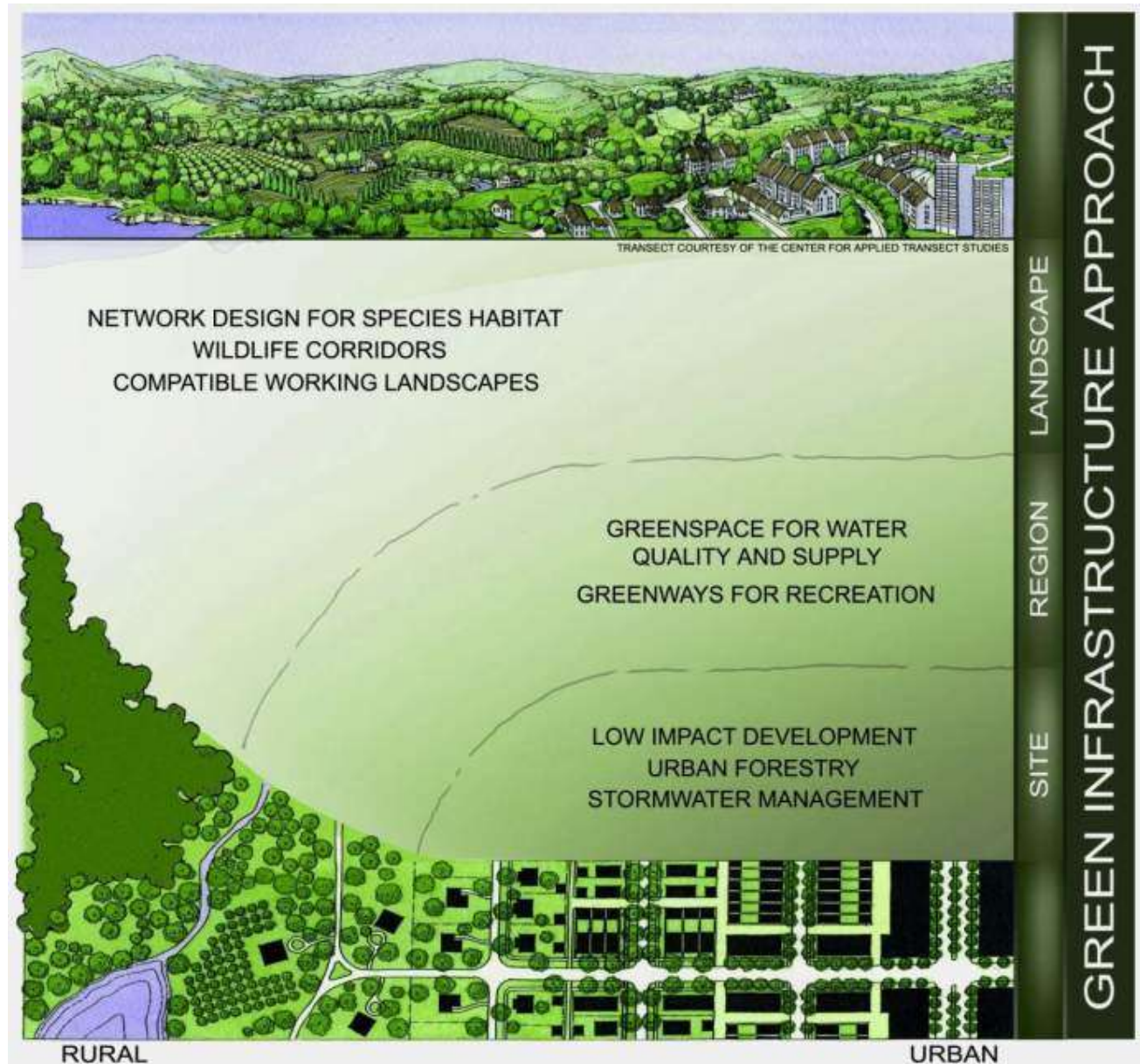
Green infrastructure benefits...

- ***Proactive***
not reactive;
- ***Systematic***
not haphazard;
- ***Multi-functional***
not Single Purpose;
- ***Multiple Scales***
not Single Scale, and
- ***Scientifically defensible,***
transparent decision-making process

The Green Infrastructure Network

A strategically planned and managed network of natural lands, working landscapes, and other open spaces that conserves ecosystem values and functions and provides associated benefits to human populations

THE CONSERVATION FUND



Green Infrastructure Plan

Technical Products

- Green infrastructure network design (enhanced Ecotype data)
- Ecological services assessment & water quality analysis
- Implementation quilt



Desired Outcomes

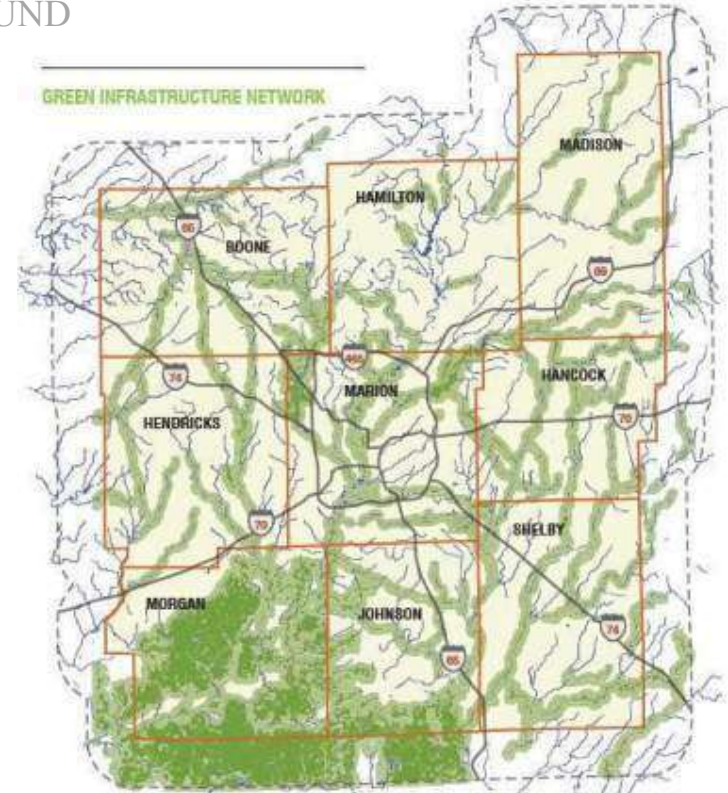
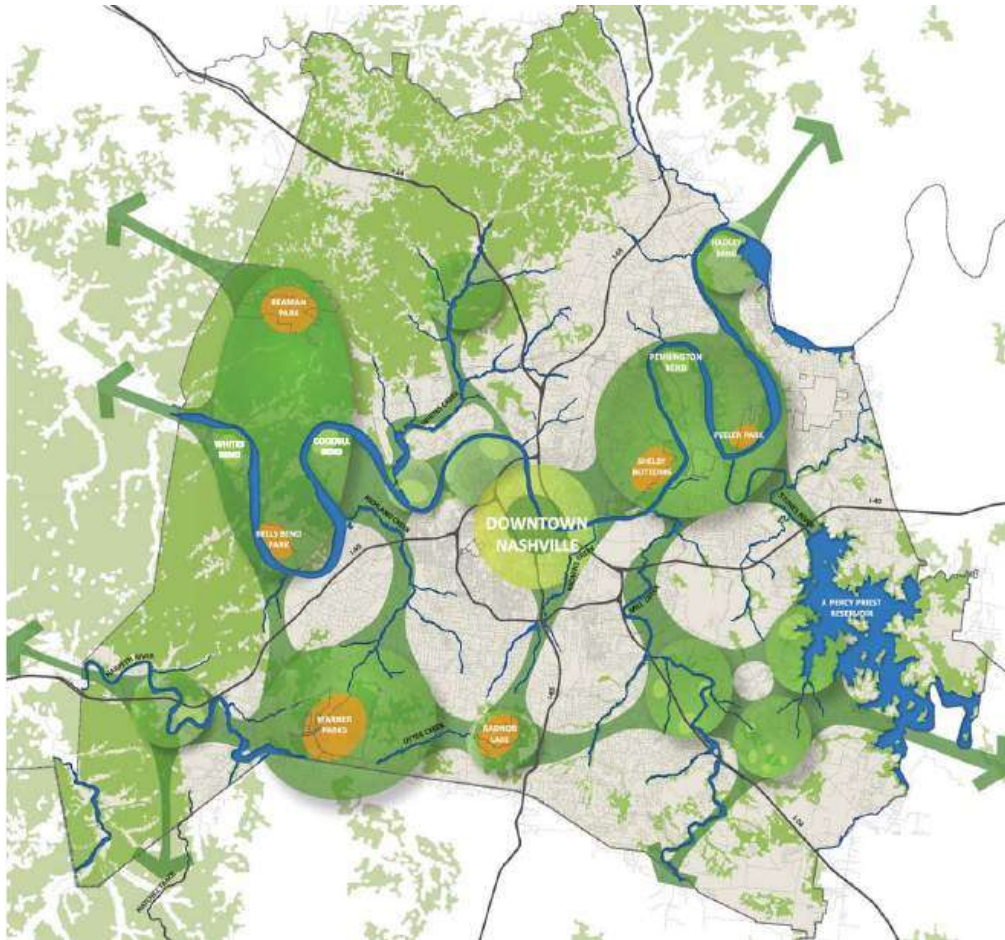
- Natural resource network to help guide policy & development decisions
- Increased public support for conservation
- Increased coordination among nonprofits and government agencies

Green Infrastructure Network Design

THE CONSERVATION FUND

Green infrastructure networks provide a community vision and help decision makers allocate scarce resources effectively and efficiently.

Nashville, TN



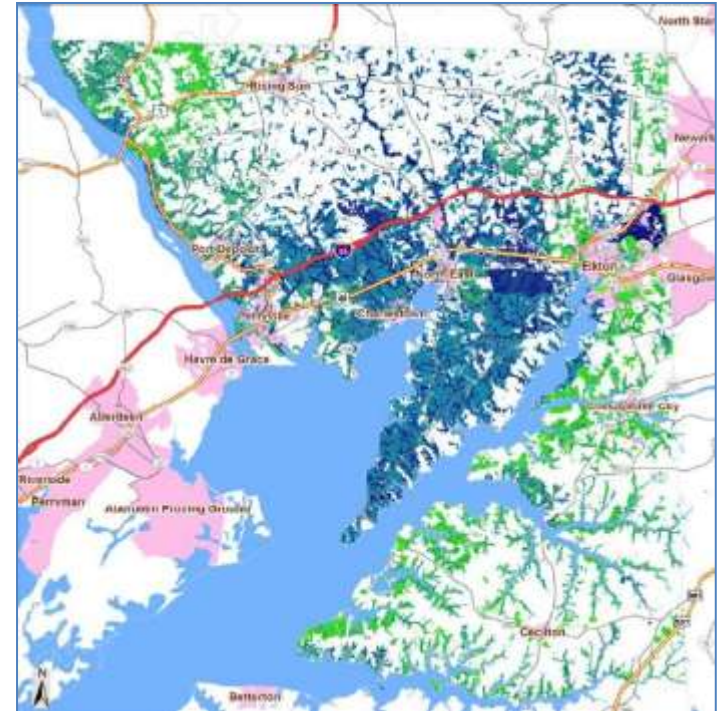
Indianapolis, IN



Ecological Services & Water Quality Example

CECIL COUNTY MD

Green infrastructure network
included 37% of land area but
81% of ecological services

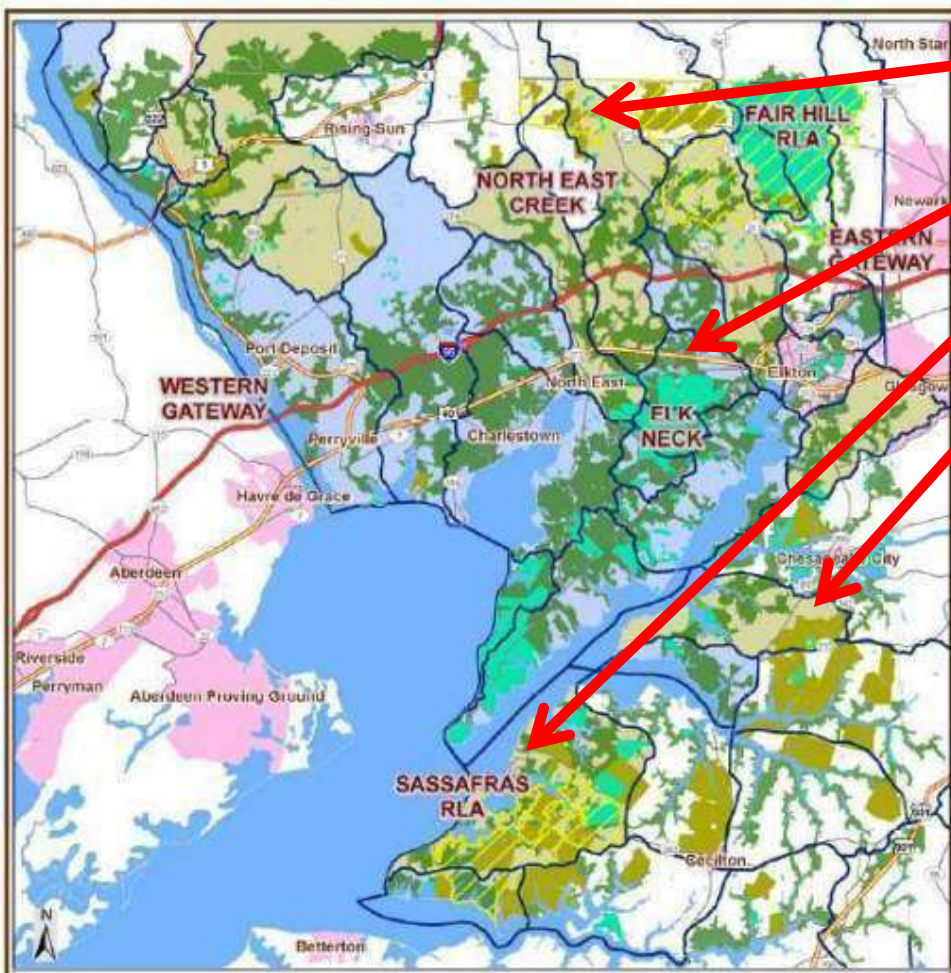


Green infrastructure network
included 94% of most
important lands for water
quality

Green Infrastructure Implementation Quilt

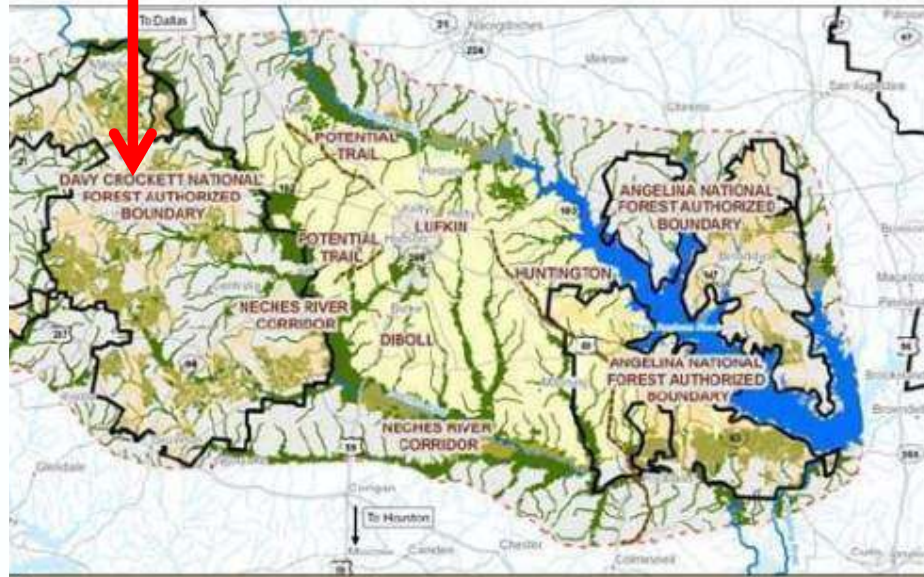
TYPES OF IMPLEMENTATION

- Land Conservation
- Incentive Programs
- Cost Share Programs
- Financing Programs
- Private Land Stewardship



Cecil County Green Infrastructure Plan
December 2007 - The Conservation Fund

<p>Conserved and Managed Lands</p> <ul style="list-style-type: none"> ■ Fed. DNR, Forest Legacy, MET/Co Parks, ES/LC, Subdivision OS <p>Agricultural Easements</p> <ul style="list-style-type: none"> ■ MALPF, MET, PDR, Rural Legacy <p>Updated Green Infrastructure Network</p> <ul style="list-style-type: none"> ■ Hubs and Corridors 	<p>Cecil County Watershed Boundaries</p> <ul style="list-style-type: none"> 14-Digit HUCs <p>Reforestation Focus Watersheds (10)</p> <ul style="list-style-type: none"> 30-40% Forest/Wetland, <7% Impervious <p>Conservation Focus Watersheds (16)</p> <ul style="list-style-type: none"> >40% Forest/Wetland, <7% Impervious
---	--



Angelina County, TX
Green Infrastructure

<p>Major Roads</p> <ul style="list-style-type: none"> — Access Roads — Highway — Main Road 	<p>Data Sources</p> <ul style="list-style-type: none"> ES/LC Data and Maps © The Conservation Fund River Parks and Wildlife Department Lovell Shreve/MapInfo, John Westcott USDA Forest Service Angelo County City of Lufkin GIS City of Diboll US Army Corps of Engineers Prepared by The Conservation Fund June 2008
---	---

Implementation Example: Milwaukee's GreenseamsSM

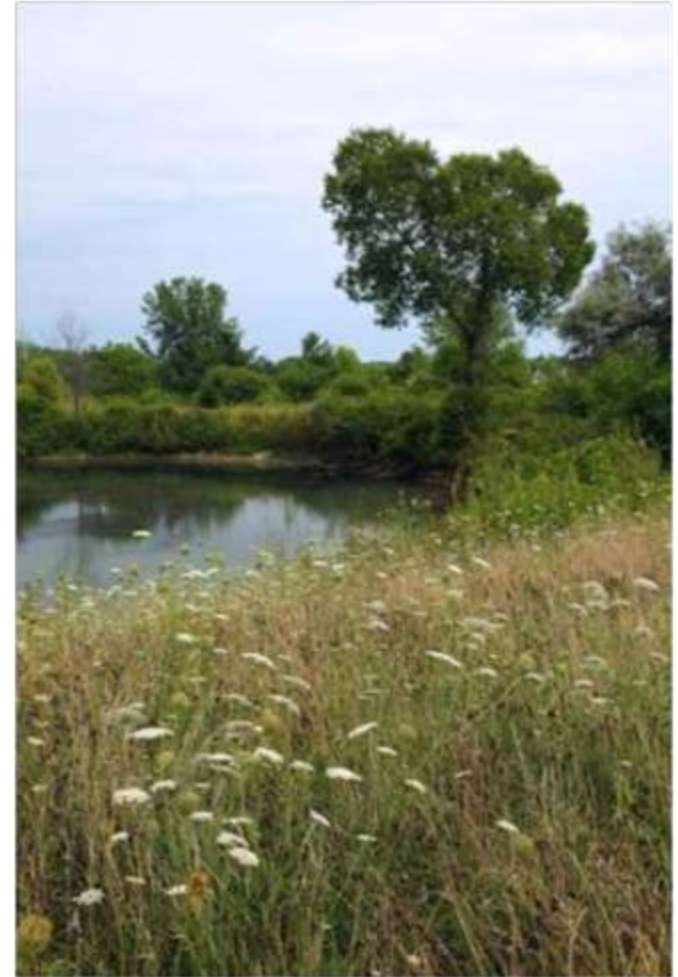
Implementation Quilt

THE CONSERVATION FUND

The Milwaukee Metropolitan Sewerage District (MMSD) and The Conservation Fund

have collaborated since 2001 in implementing a green-infrastructure design for flood management and water quality.

Over 2,100 acres of land with hydric (water absorbing) soils are now linked in a permanently protected natural network. Funding comes from MMSD, state and Federal grants, and other sources.



Green Infrastructure Plan

Next Steps

- Data discovery & plan analysis
- Ecological services literature review
- Coordination with Sustainable Communities Consortium



Technical Objectives

- Expand/enhance ecotype data to 13+ county area
- Select ecological services to analyze and estimate costs & benefits
- Provide products for public involvement process & technical analysis