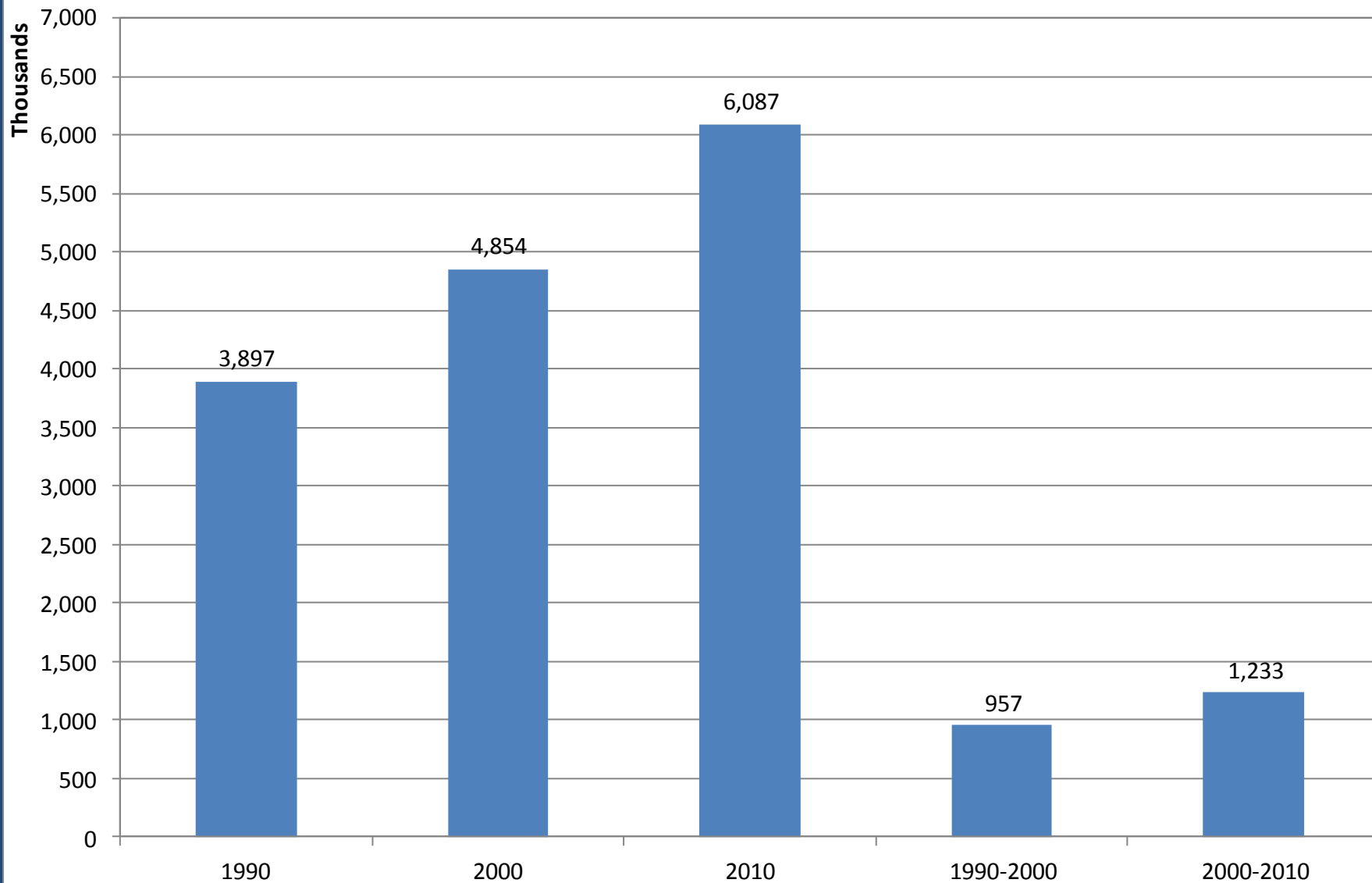
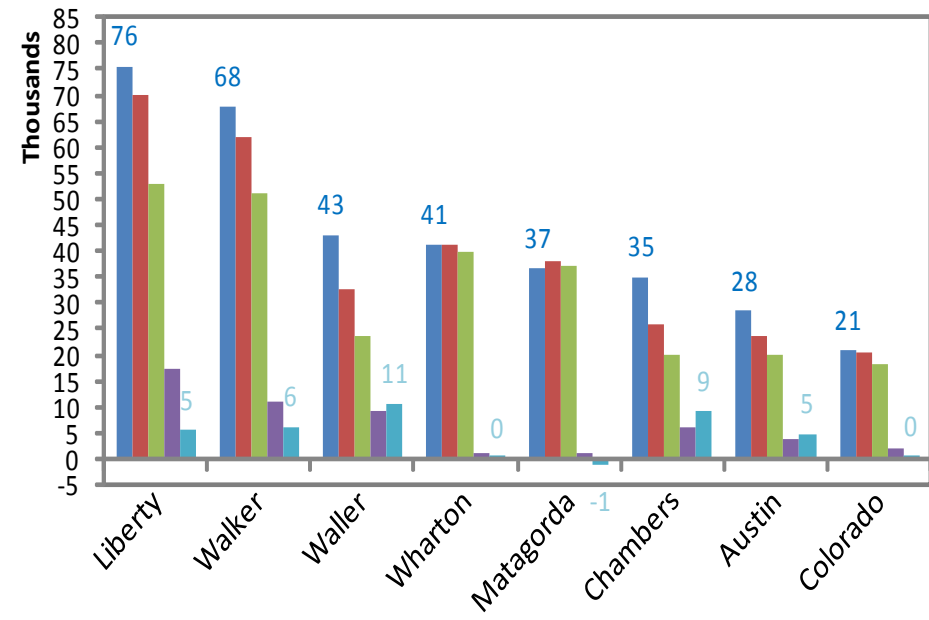
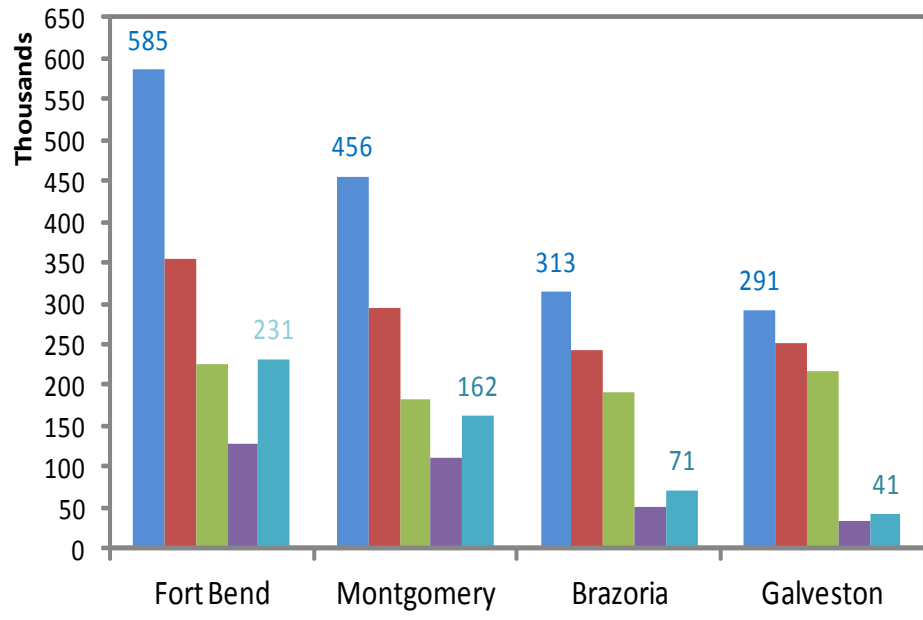
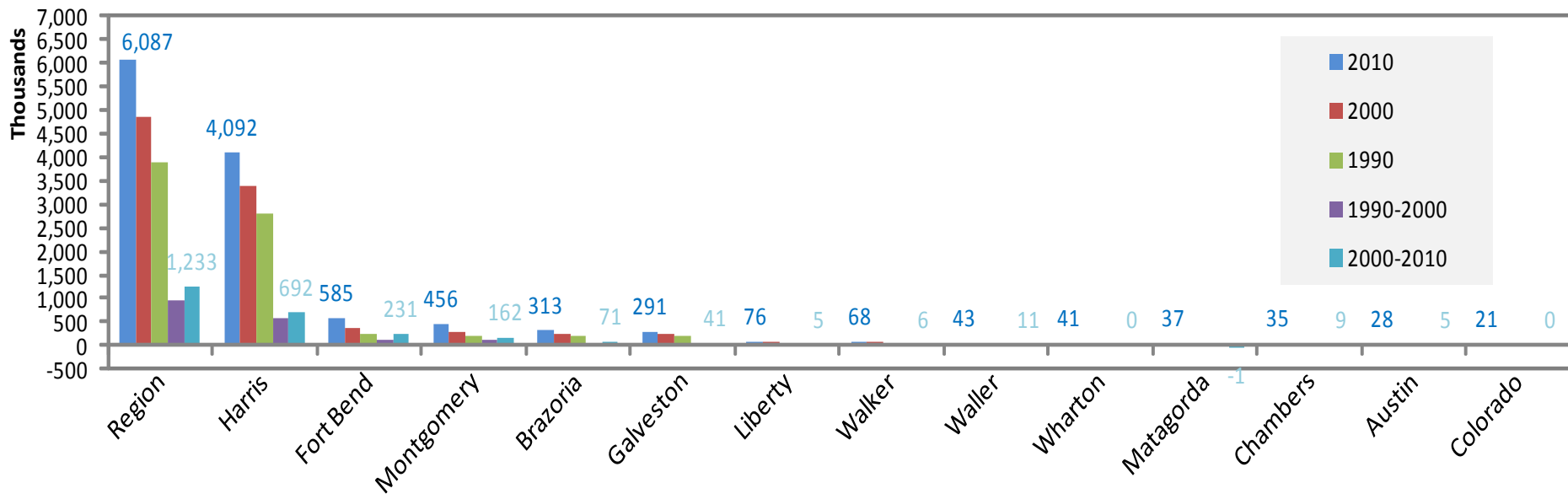


2010 Census

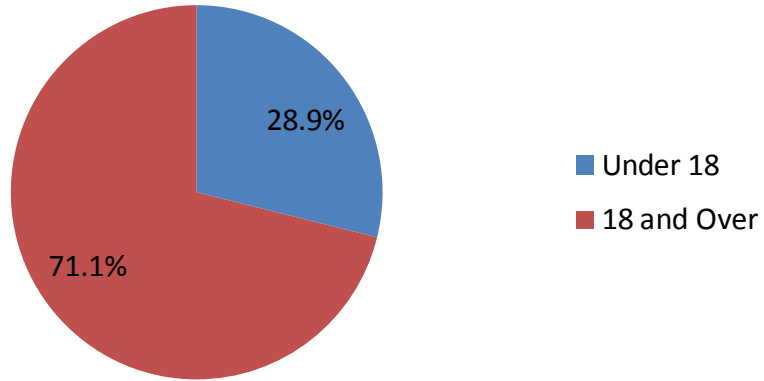
- 2010 Census Data Release Schedule
 - February 2011: Redistricting Data
 - Summer 2011: Detailed Demographic Data (age, race, sex, household composition)
- American Community Survey (ACS) replaced the “Long Form” (information on income, education, disability, etc.) – continuous data collection

H-GAC 13-County Region: Total Population and Population Change

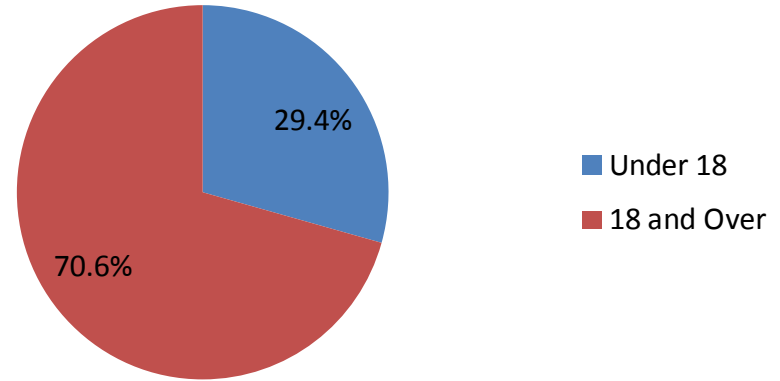




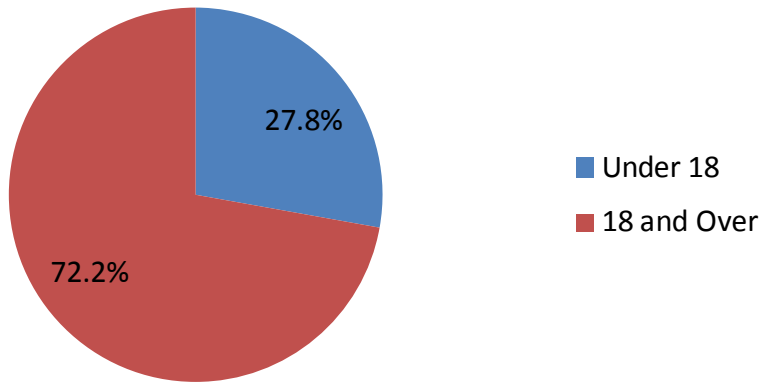
Population in 2000



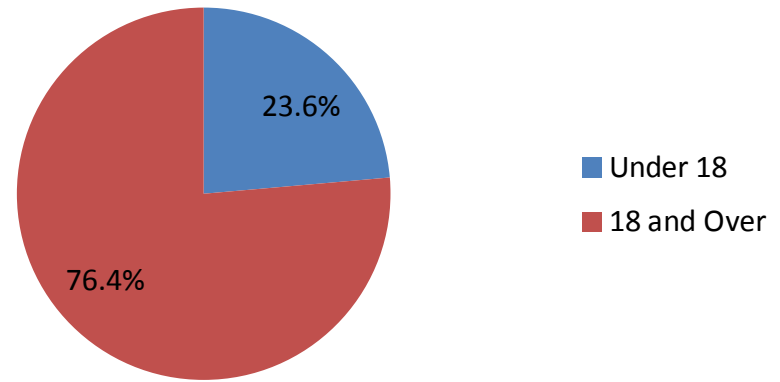
Population Growth, 1990-2000



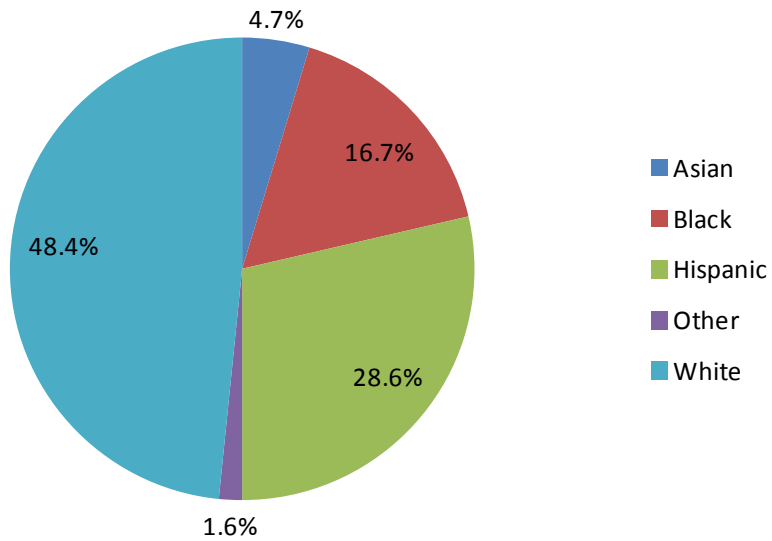
Population in 2010



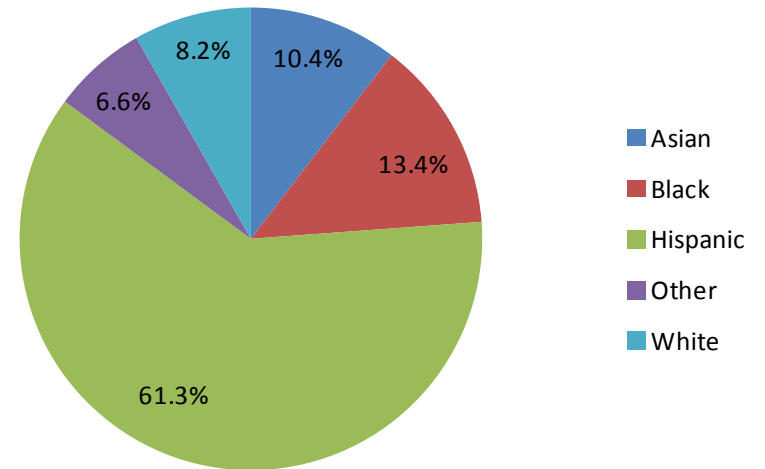
Population Growth, 2000-2010



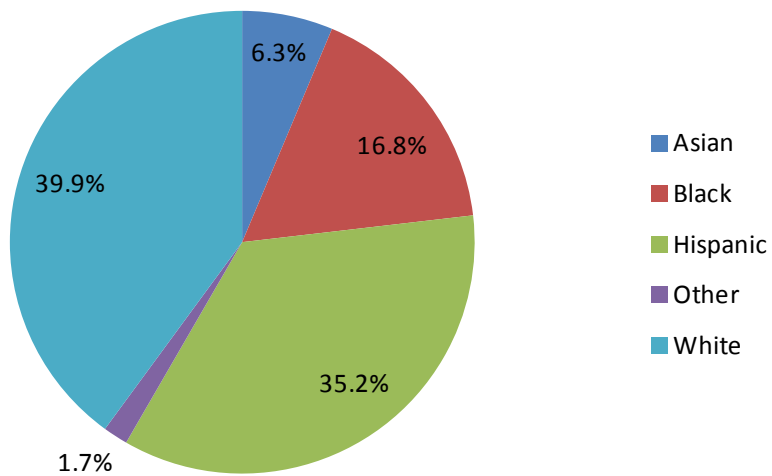
Population in 2000



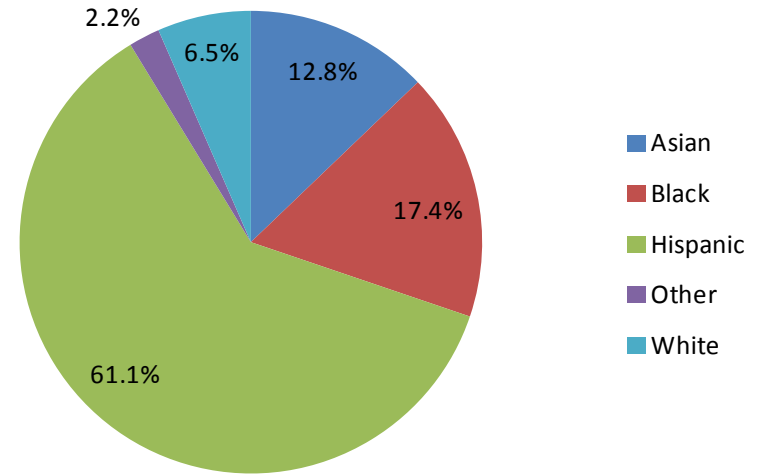
Population Growth, 1990-2000



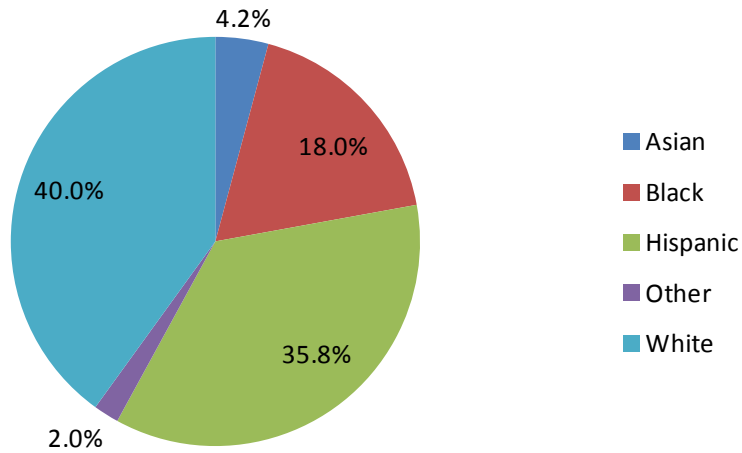
Population in 2010



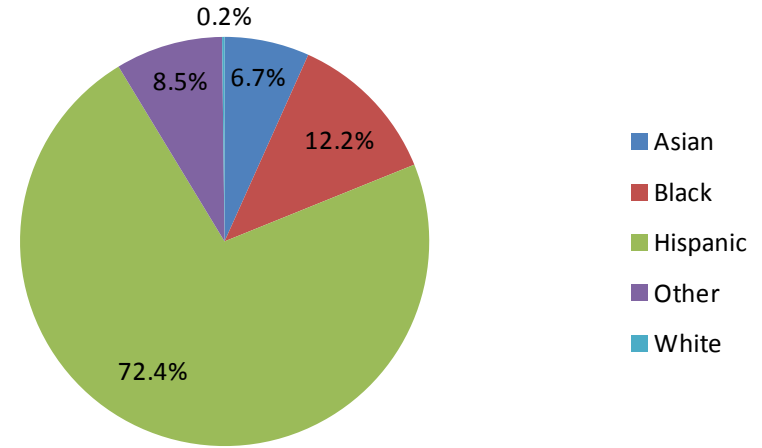
Population Growth, 2000-2010



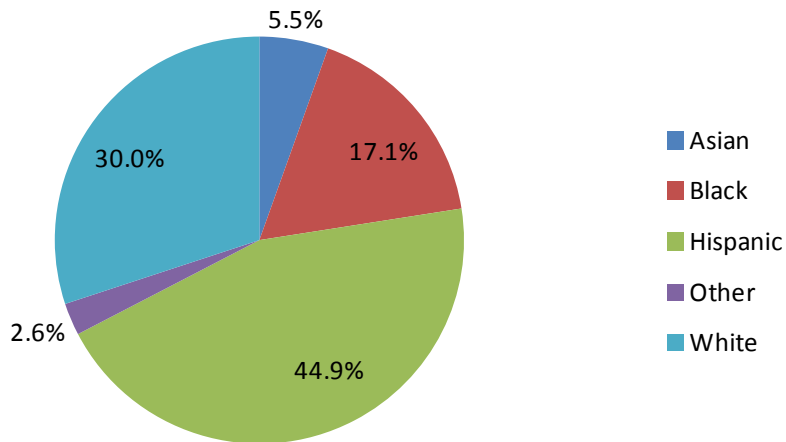
Population Under 18 in 2000



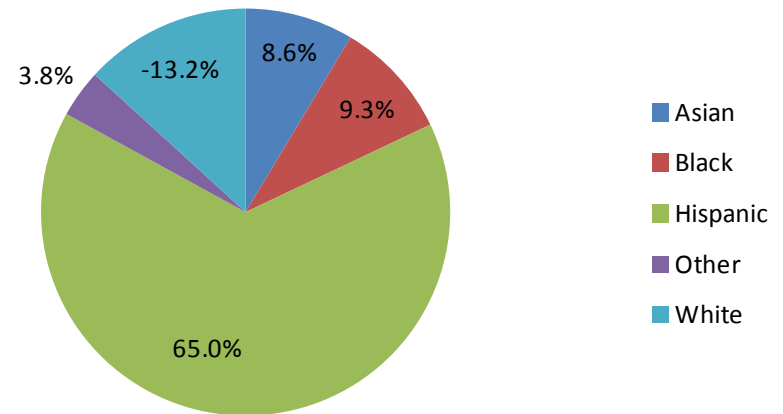
Change in Population Under 18, 1990-2000



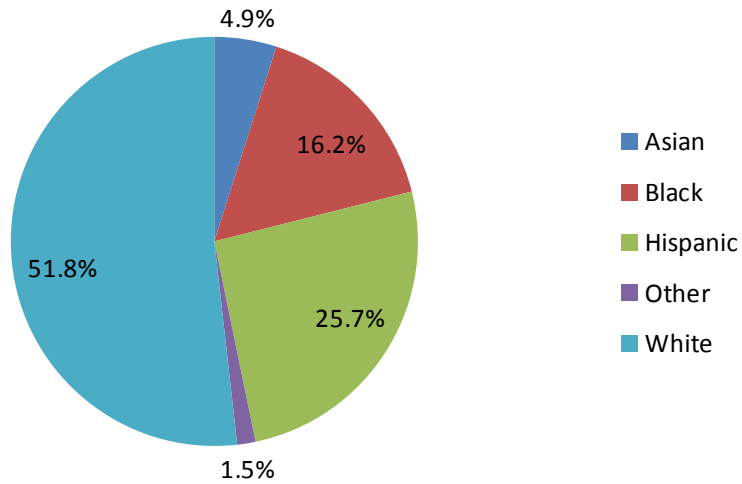
Population Under 18 in 2010



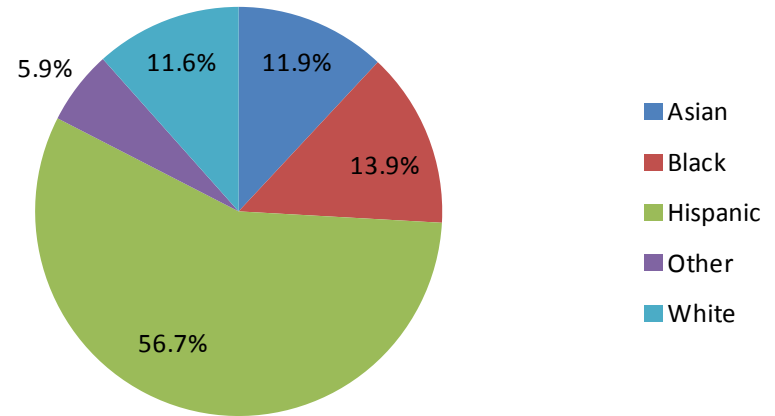
Change in Population Under 18, 2000-2010



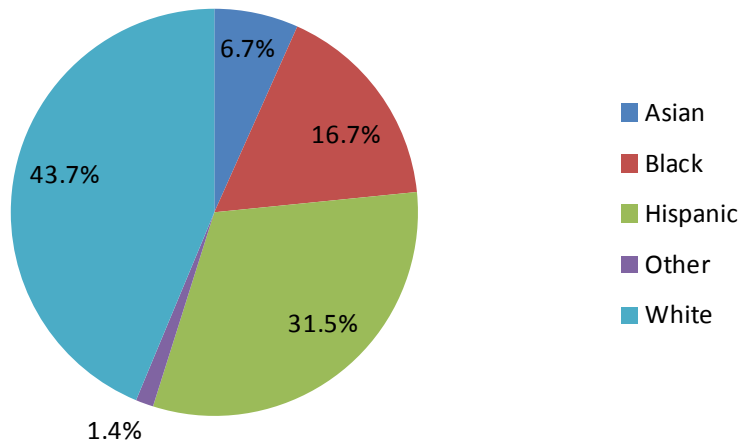
Population 18 and Over in 2000



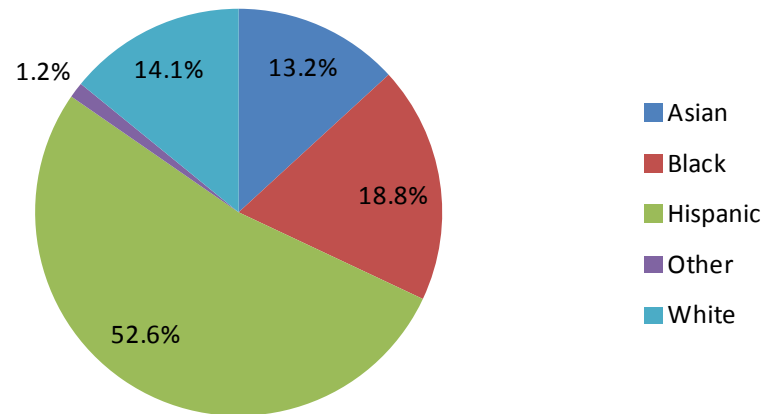
Change in Population 18 and Over, 1990-2000



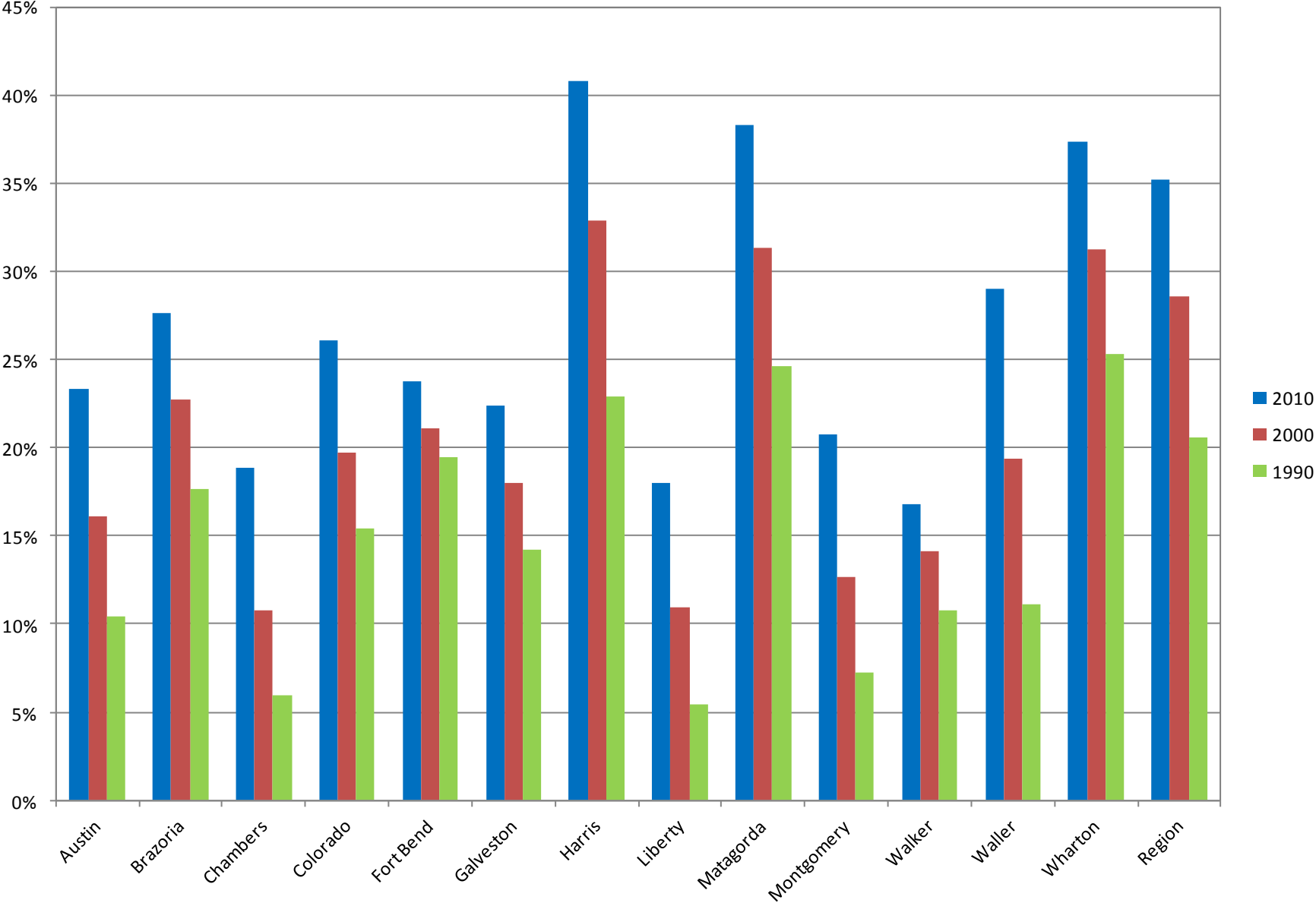
Population 18 and Over in 2010



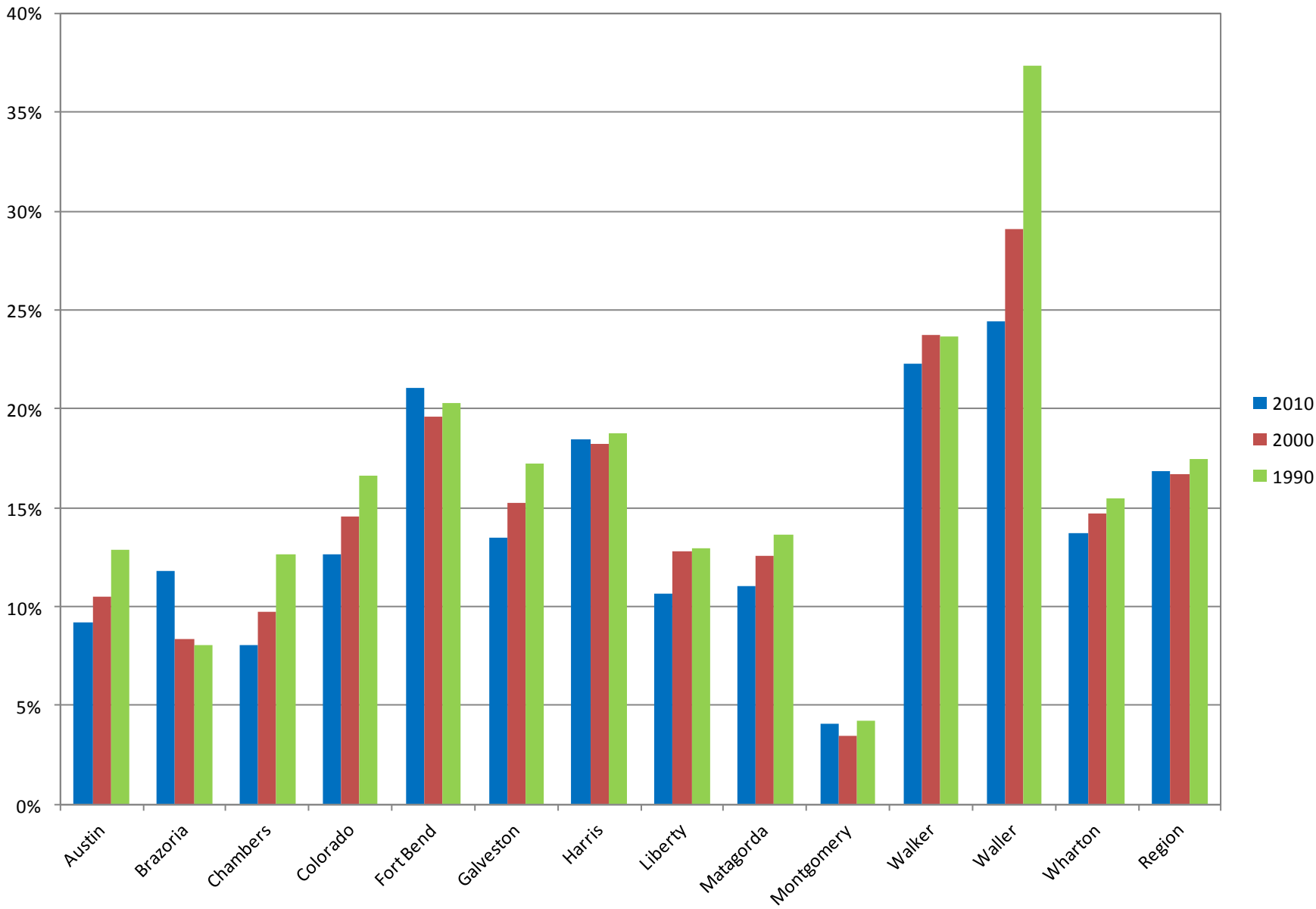
Change in Population 18 and Over, 2000-2010



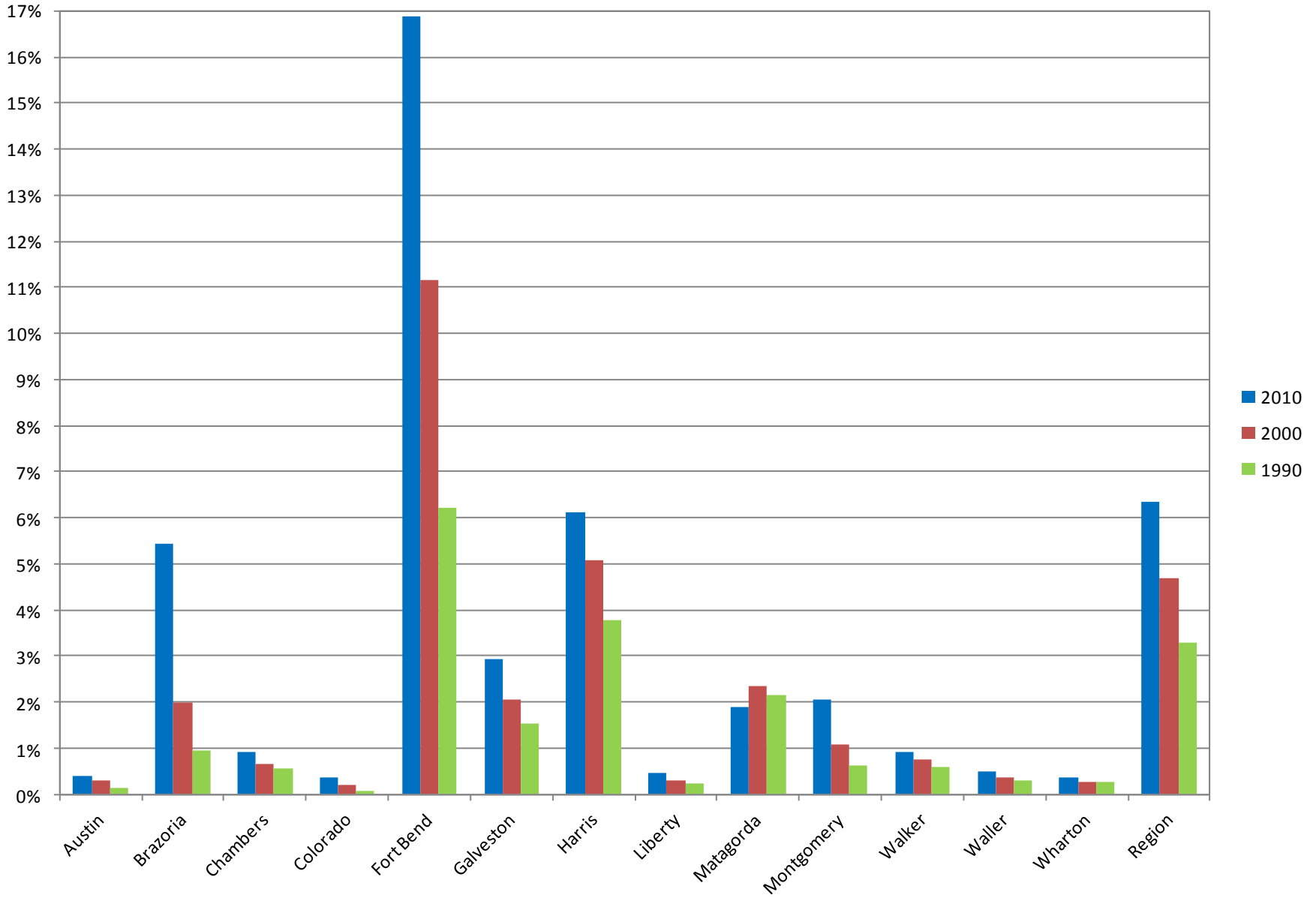
Hispanic Population

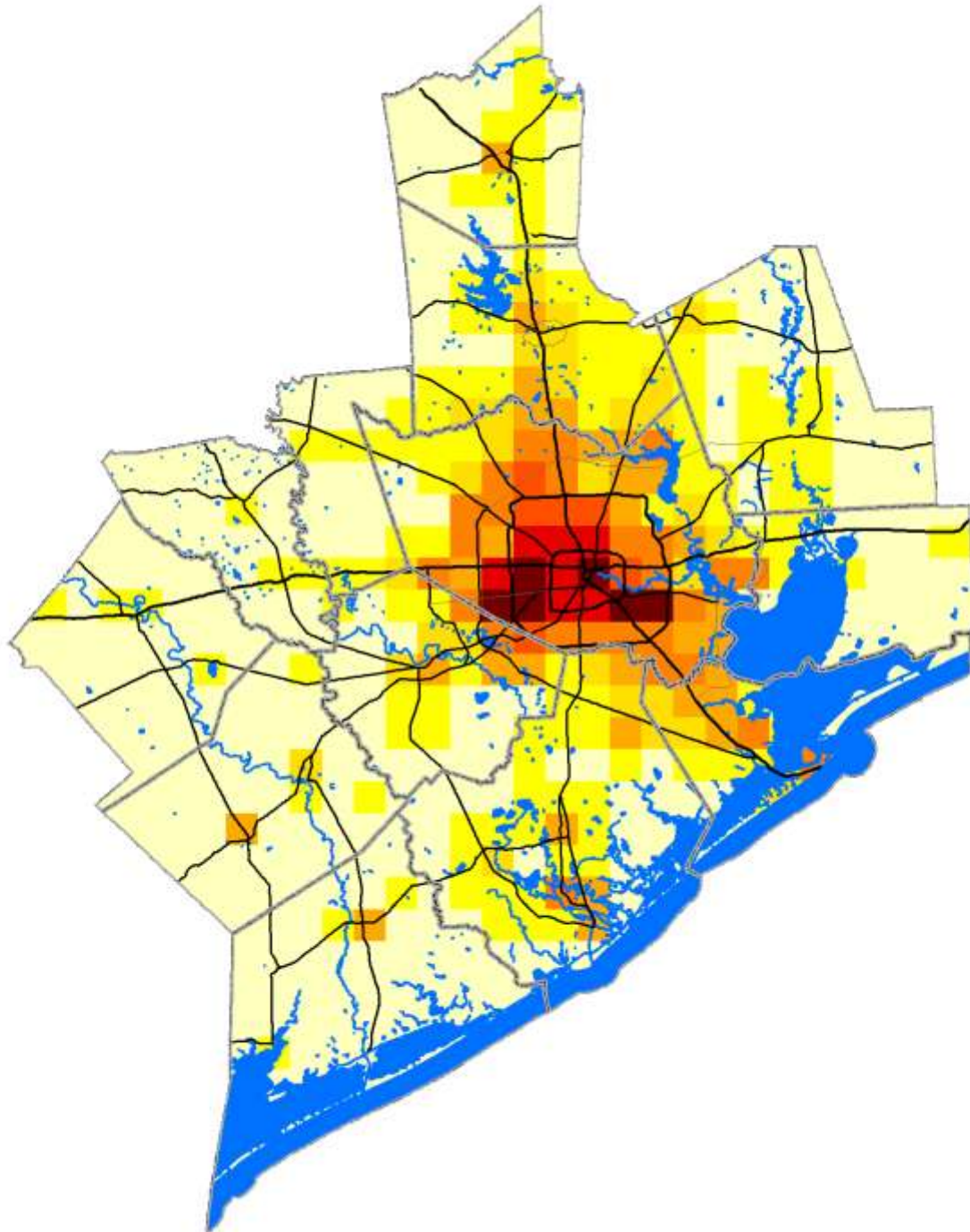


Black Population

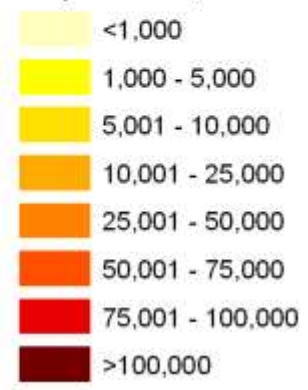


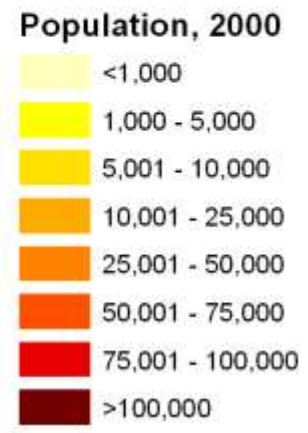
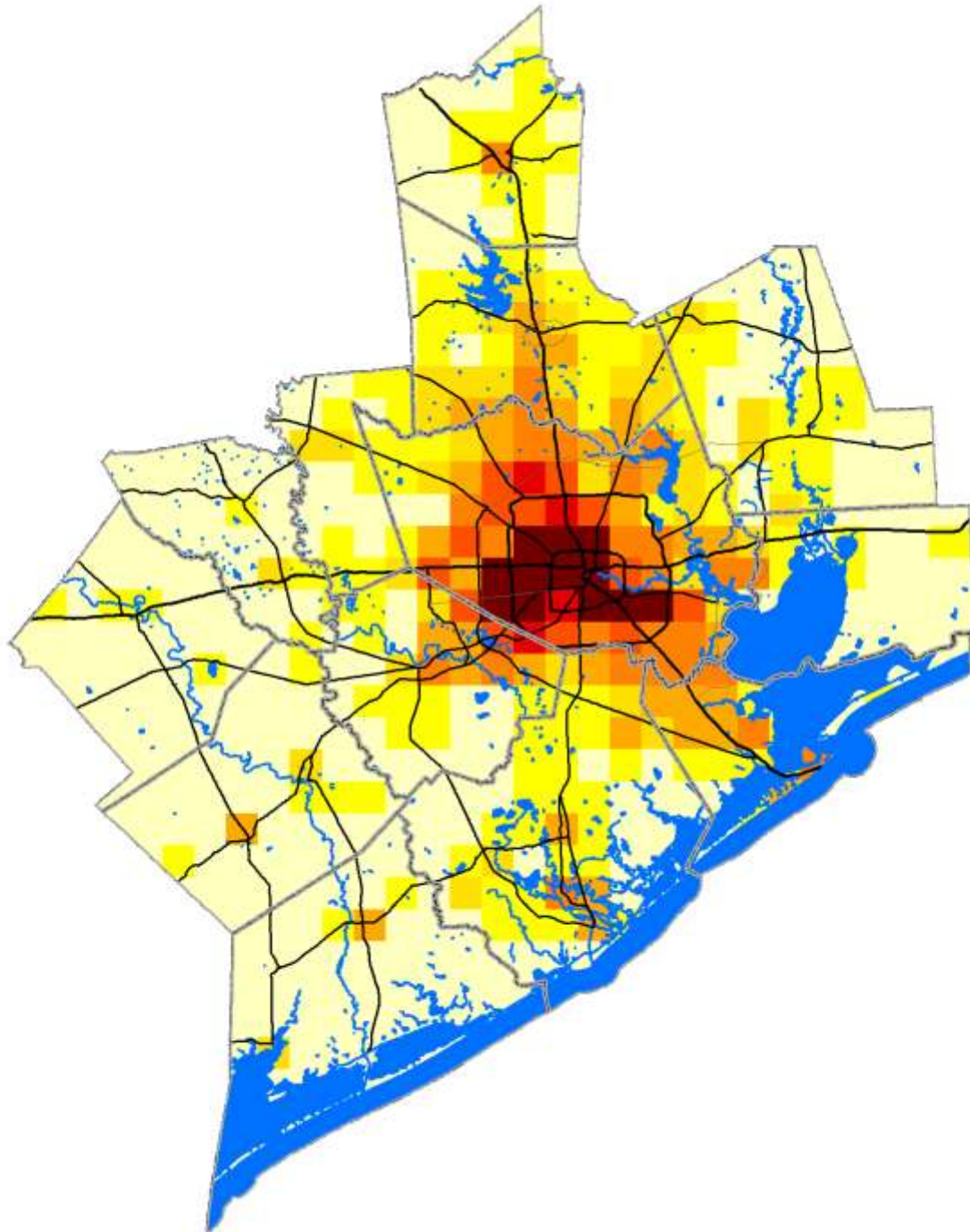
Asian Population

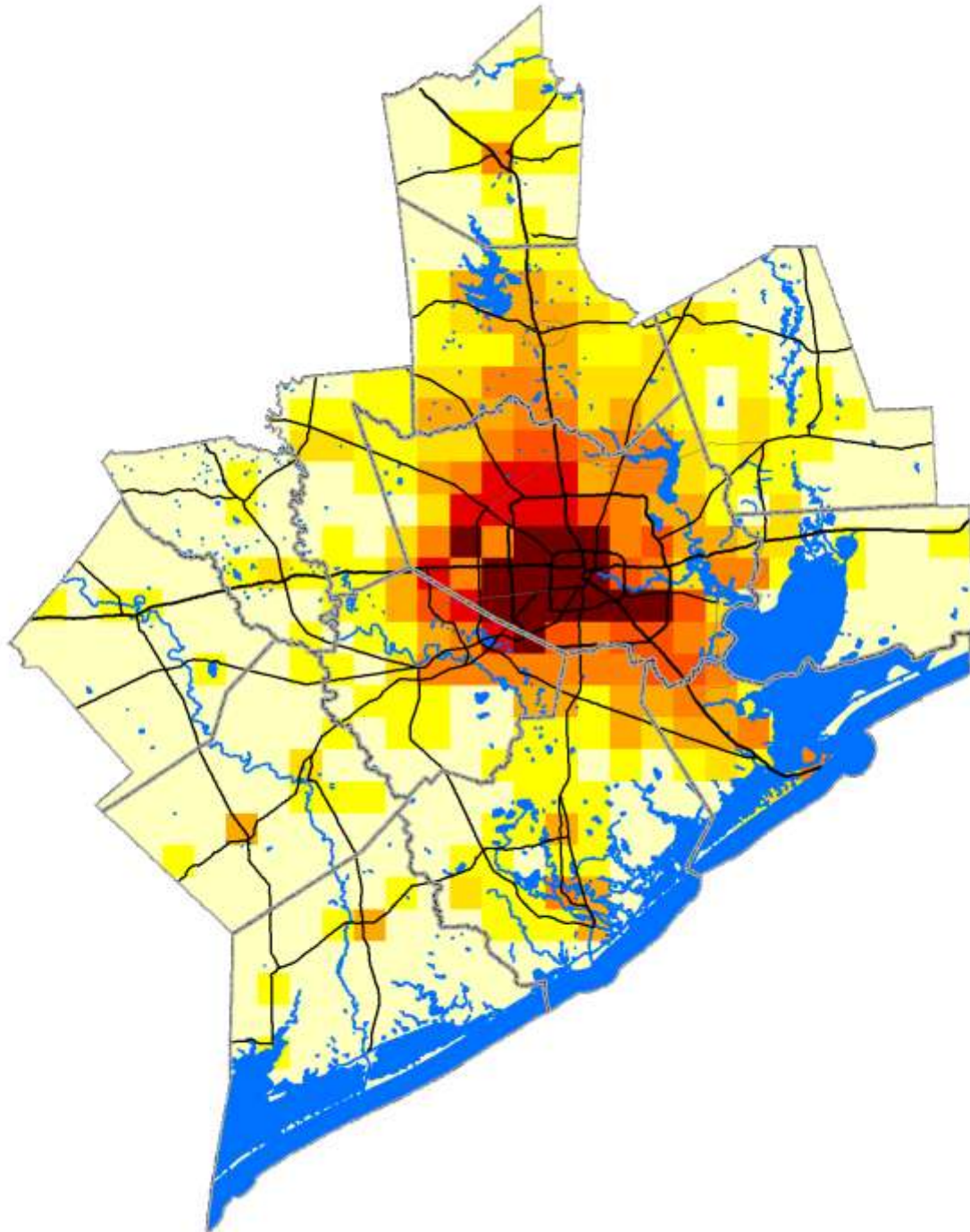




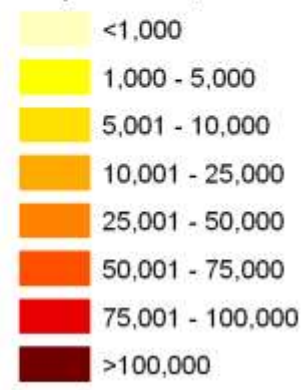
Population, 1990

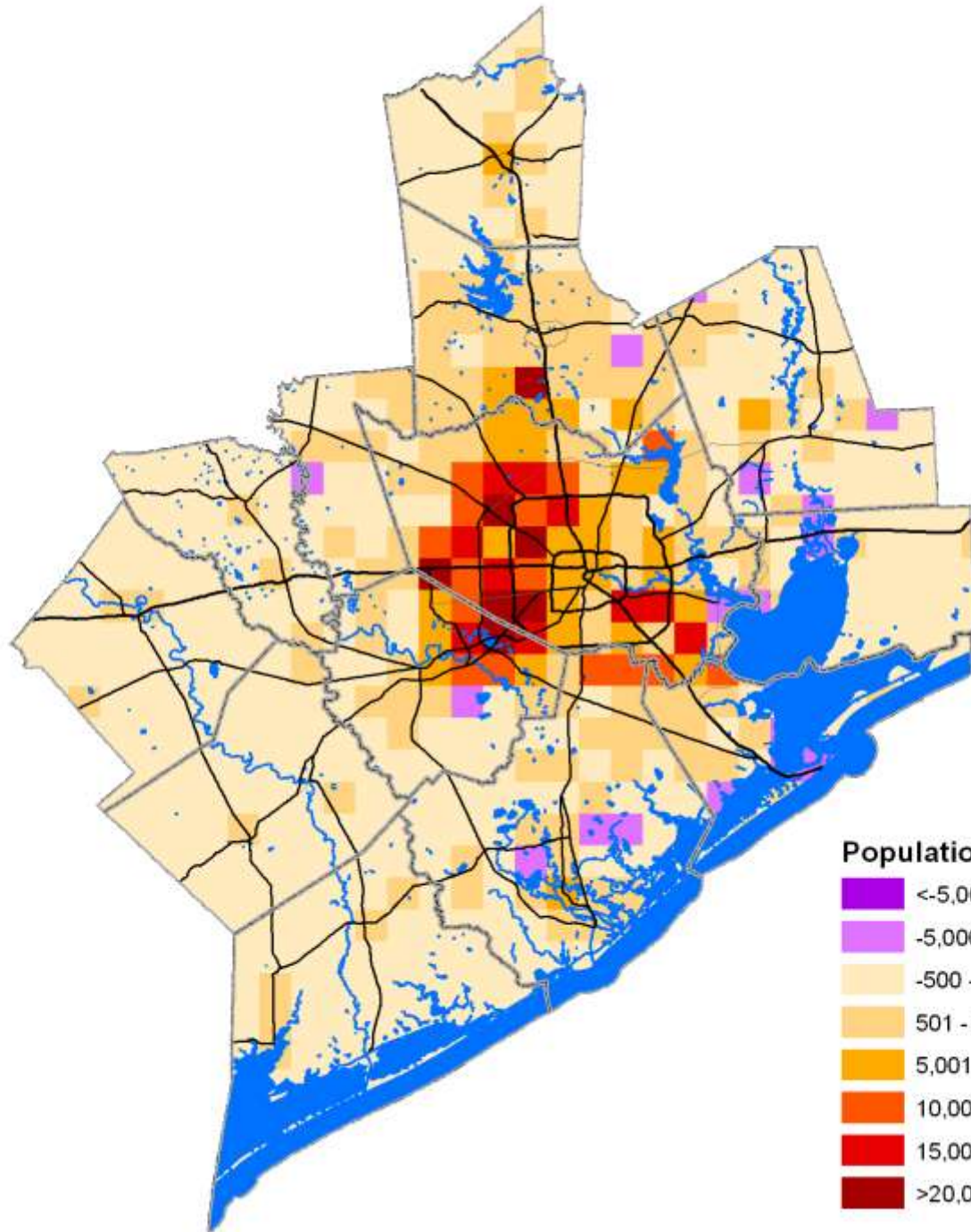






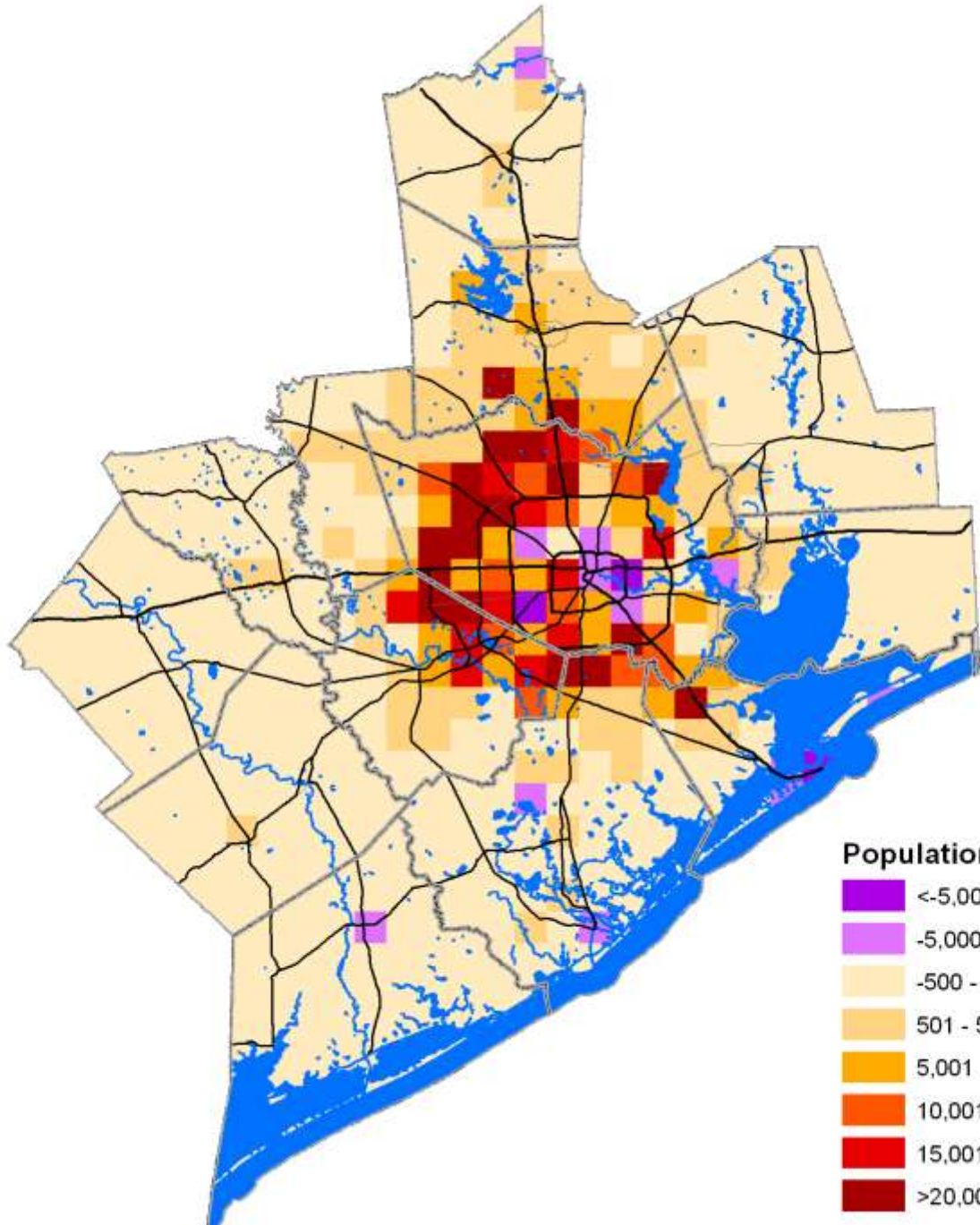
Population, 2010



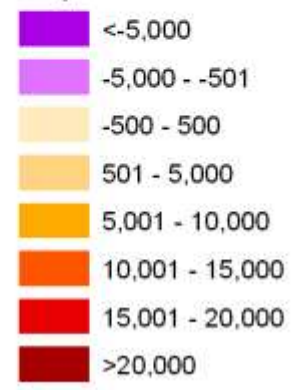


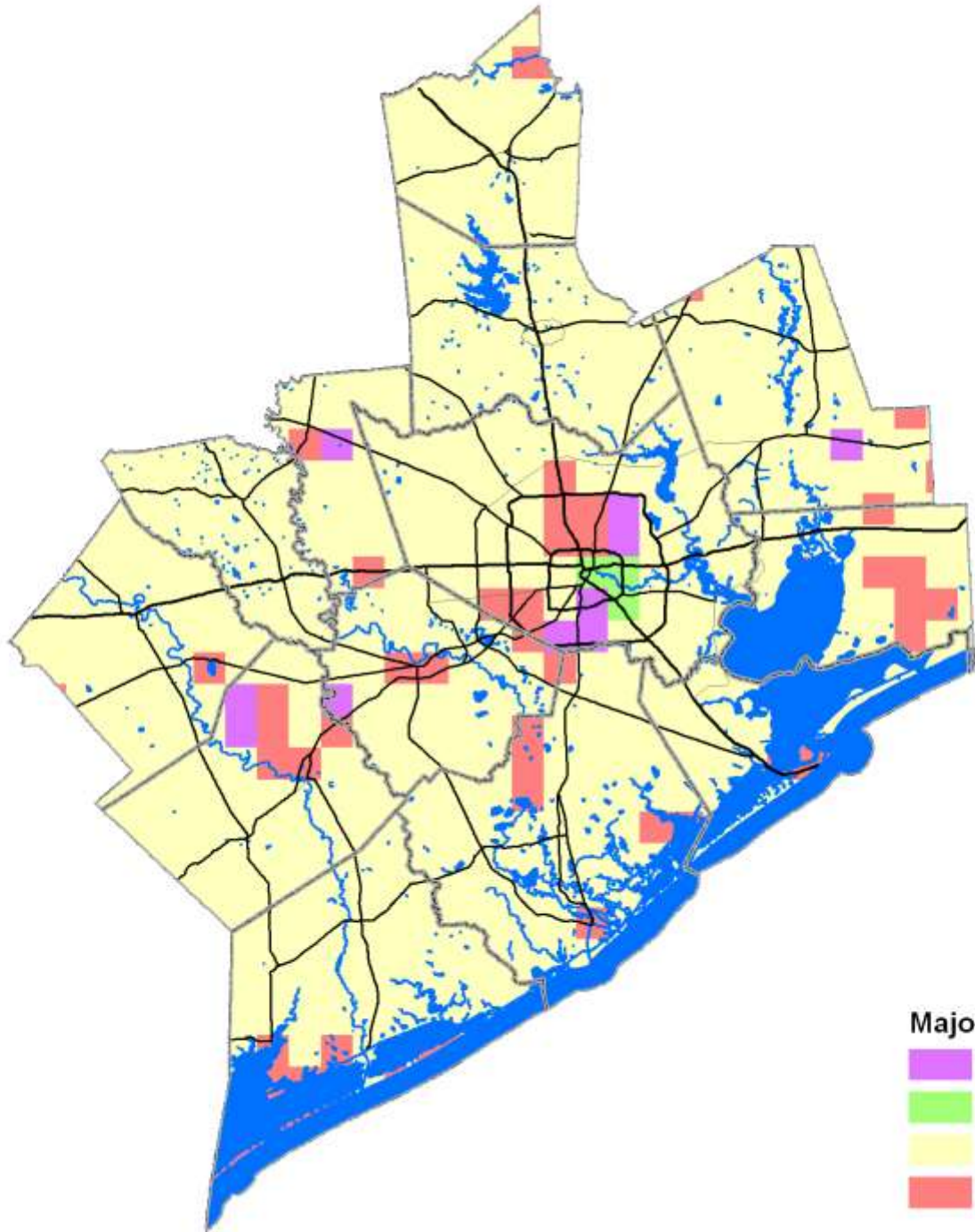
Population Growth, 1990-2000




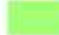




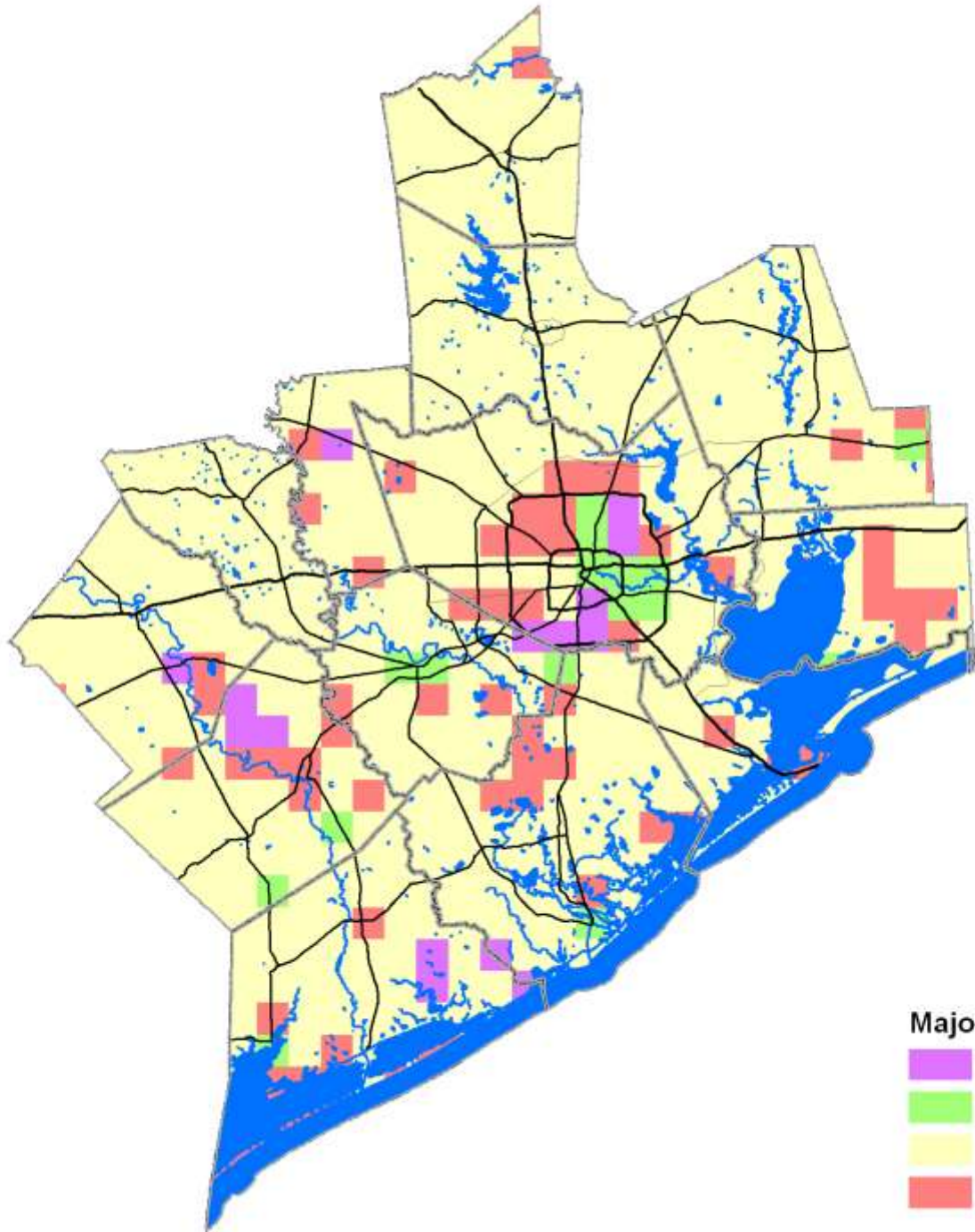
Population Growth, 2000-2010









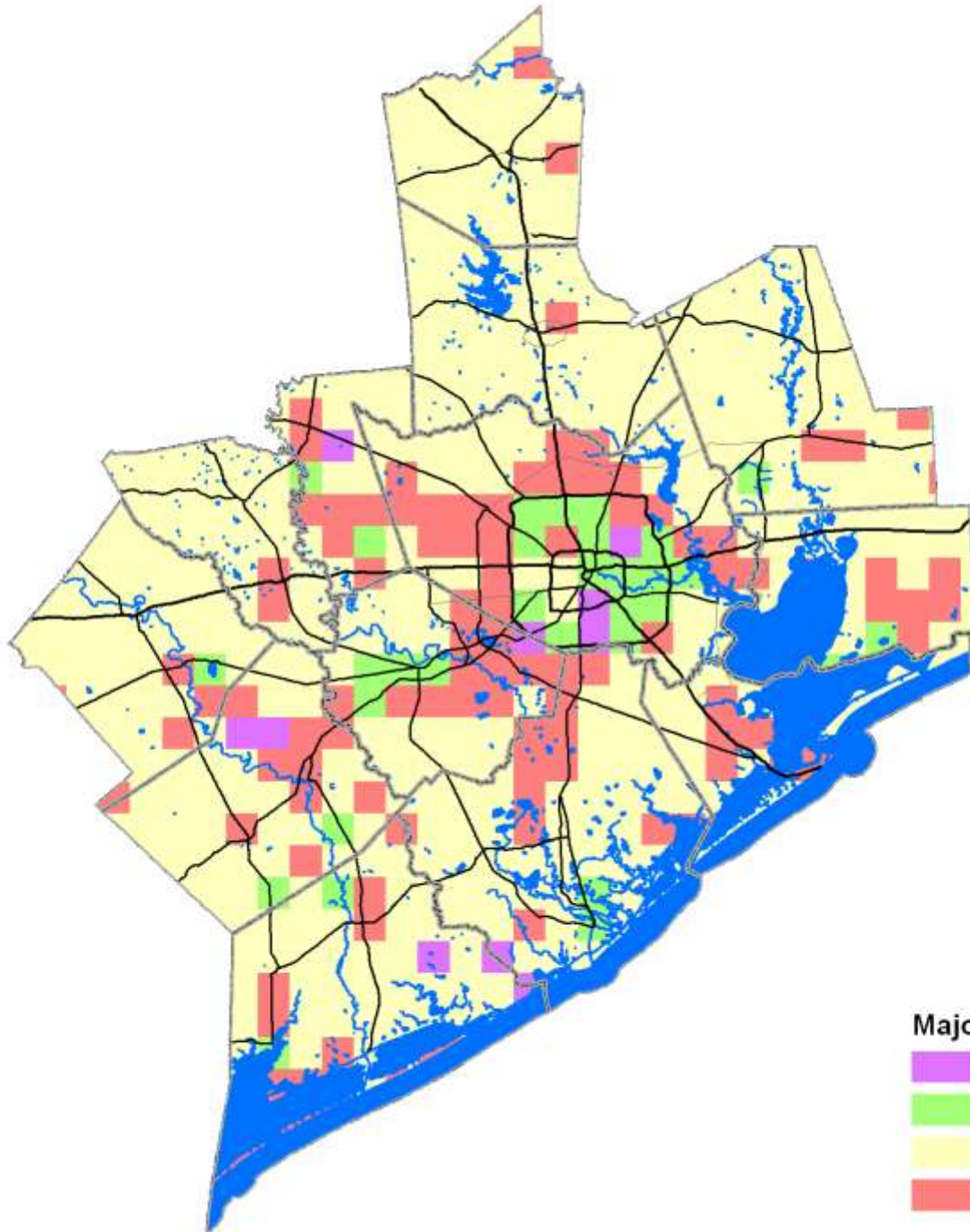
Majority Population, 1990

-  Black
-  Hispanic
-  White
-  No Majority


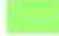




Majority Population, 2000

-  Black
-  Hispanic
-  White
-  No Majority



Majority Population, 2010

-  Black
-  Hispanic
-  White
-  No Majority

Thank you

Questions?